



BMW HP2 (2005 - 2006)

Slip-On Exhaust System

# Akrapovic Slip-On Exhaust System

for the BMW HP2 (2005 - 2006)

We have developed an Akrapovic SLIP-ON system for the BMW muscle enduro designed to accentuate the sport design of the motorcycle. The system increases engine performance and adds visual enhancement.

## PERFORMANCE

Measurements of the Akrapovic SLIP-ON system on the BMW HP2 (without muffler insert):

Power & Torque: the SLIP-ON system increases power output throughout the entire rpm range, especially at the top end. The exhaust system also delivers increased torque. Like the power curve, torque is increased throughout the range, which is well suited to the character and design of the motorcycle.

## CONFIGURATION

The Akrapovic SLIP-ON system is distinguished by the use of titanium. The cylindrical titanium link pipe is welded to the muffler, and attached to the stock header assembly using a sleeve joint secured with a metal clamp. The component parts of the muffler are also made of titanium: outer sleeve, inlet and outlet cap and perforated inner sleeve. The muffler is attached to the frame using a carbon-fiber clamp. A carbon-fiber heat shield is mounted on the link pipe. The muffler is also available in an "open" version which also has a noise damper, while the street legal version is approved for street use and conforms to noise level regulations.

	PERFORMANCE		
	stock	AKRAPOVIC	max. increased power
max. rear wheel power HP / rpm (measured on Dynojet ATV)	93.8 / 7500	95.1 / 7600	2.5 / 6900

	CONFIGURATION		
	header tubes	collector	link pipe
material	-	-	TITANIUM
tube shape	-	-	CYLINDRICAL

interference crossover tubes	-	lambda sensor	-
header tube inner sleeves	-	header tube flanges	-
header tubes - collector connection	-	collector / header tube - link pipe connection	SLEEVE JOINT + SILICON SHIELDED SPRING
link pipe - muffler connection	WELDED	muffler inlet cap / outlet cap	TITANIUM / TITANIUM
muffler metal interior	TITANIUM	muffler outer sleeve	TITANIUM
muffler clamp	CARBON-FIBER	muffler bracket	-
muffler insert	NOISE DAMPER (approved - street legal version only)	heat shield	CARBON FIBER
		catalytic converter	-

	ADDITIONAL DATA				
	stock	AKRAPOVIC		difference	
		S.S. link pipe	TITANIUM link pipe	stock - S.S.	stock - titanium
weight comparison (kg)	4.47	-	2.19	-	2.28

	stock	AKRAPOVIC
	noise measurements (dB / rpm)	88 / 3500
possibility of periodic service without removing A.E.S.	oil	oil filter
	YES	YES
legal for street use	NO / YES (street legal version)	

Technical specifications of Akrapovic exhaust systems and related products subject to change without notice.

Product code: 105489 (S-B12SO3-LTC)  
105488 (S-B12SO3-LTT)

# Akrapovic Slip-On Exhaust System for the BMW HP2 (2005 - 2006)



Akrapovic Exhaust System Technology copyright 2006, all rights reserved

Road Program



ANTI-SEIZE LEAD-FREE  
COPPER PASTE



CARBON-FIBER  
MUFFLER CLAMP

Product code: 105489 (S-B12SO3-LTC)  
105488 (S-B12SO3-LTT)

# Akrapovic Slip-On Exhaust System for the BMW HP2 (2005 - 2006)



Akrapovic Exhaust System Technology copyright 2006, all rights reserved

Road  
Program

Product code: 105489 (S-B12SO3-LTC)  
105488 (S-B12SO3-LTT)

# Akrapovic Slip-On Exhaust System for the BMW HP2 (2005 - 2006)



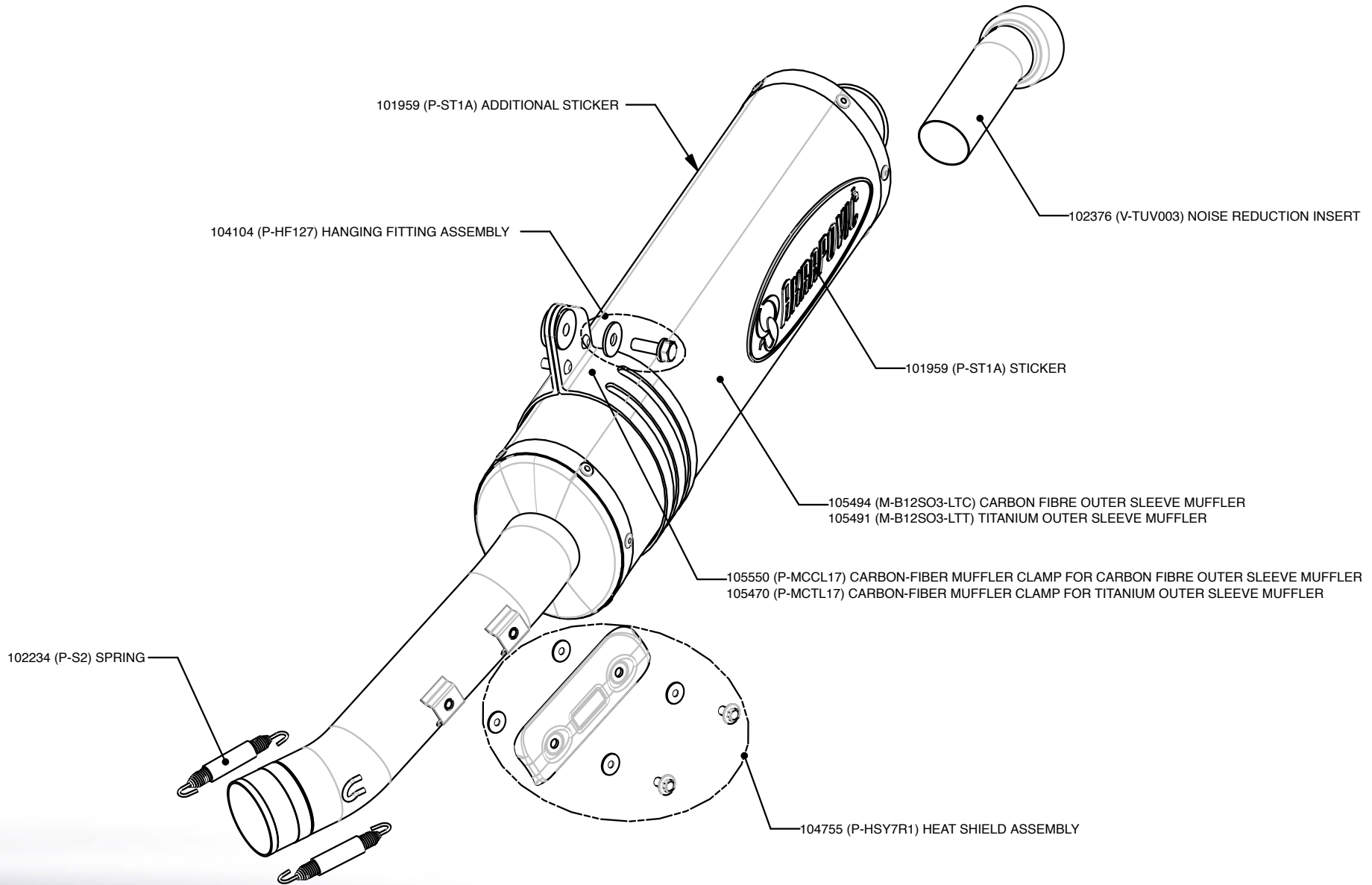
Akrapovic Exhaust System Technology copyright 2006, all rights reserved

Road  
Program

Product code: 105489 (S-B12SO3-LTC)  
105488 (S-B12SO3-LTT)

# Akrapovic Slip-On Exhaust System for the BMW HP2 (2005 - 2006)

Akrapovic Exhaust System Technology copyright 2006, all rights reserved

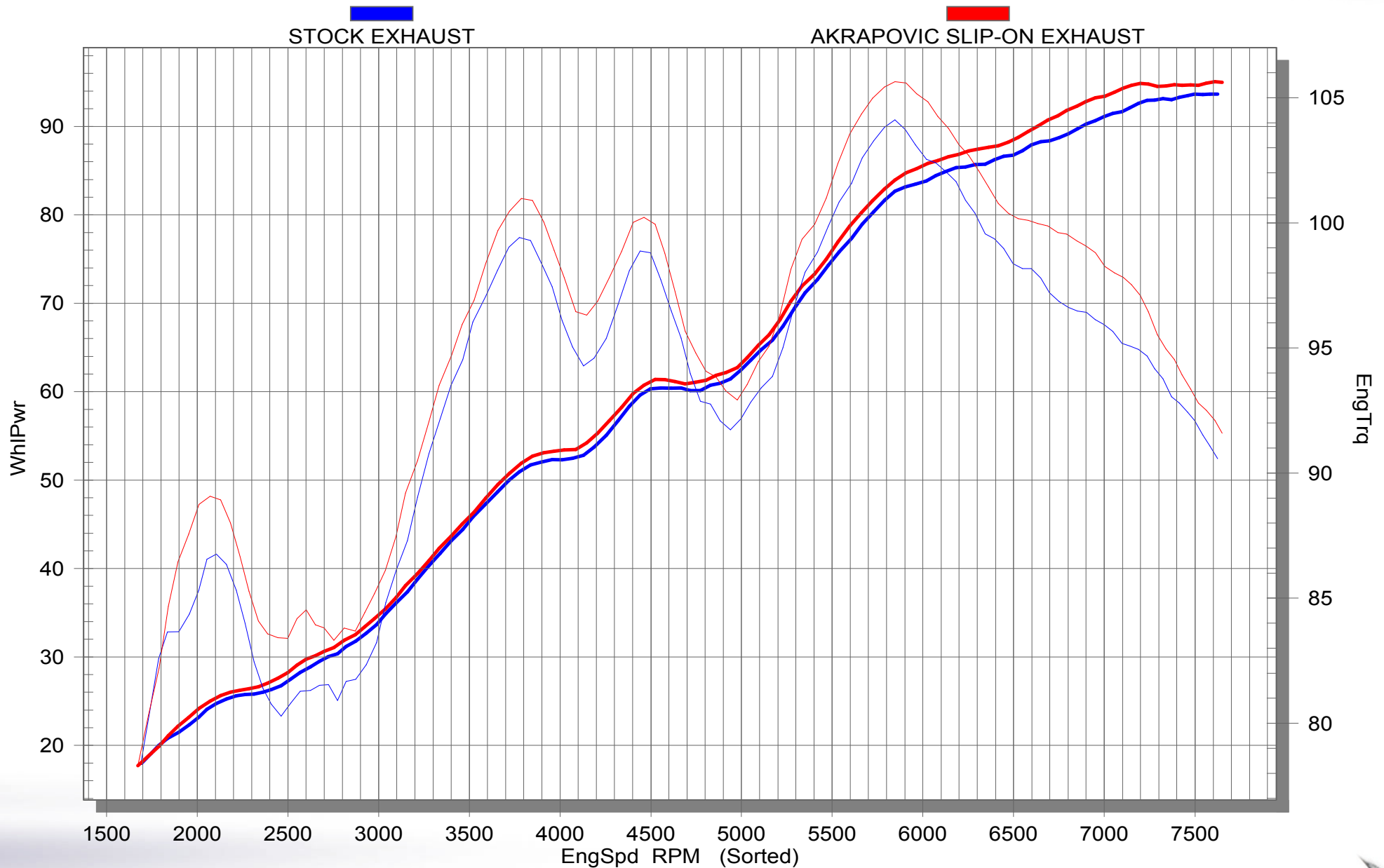


Road Program

Product code: 105489 (S-B12SO3-LTC)  
105488 (S-B12SO3-LTT)

# Akrapovic Slip-On Exhaust System

for the BMW HP2 (2005 - 2006)



Akrapovic Exhaust System Technology copyright 2006, all rights reserved

Road Program

Product code: 105489 (S-B12SO3-LTC)  
105488 (S-B12SO3-LTT)

