



BMW R 1200 S (2006)

Racing & Evolution Exhaust System

Akrapovic Racing & Evolution Exhaust System

for the BMW R 1200 S (2006)

For all riders who want the most out of the exhaust system for their BMW, we offer Akrapovic Racing and Evolution systems. The upgrade is reflected in an increase in power, and an even bigger increase in torque. And of course there's the visual enhancement. The Street Legal versions of the systems come with noise dampers and are approved for street use.

PERFORMANCE

Measurements of the Akrapovic EVOLUTION system on the BMW R 1200 S (without muffler insert):

Power & Torque: the Akrapovic Racing and Evolution exhaust systems smooth out the power and especially the torque curves in the middle and the top of the range. The engine becomes considerably more responsive and enhances the sports character of the BMW. Max. power of 116.4 HP was measured at 7750 rpm. The most welcome figure is max. increased power, which measures 6.2 HP at 5400 rpm.

CONFIGURATION

The Akrapovic Racing and Evolution systems are configured identically, and differ only in their selection of tubing materials: The tubes for the Racing are made of stainless steel, while the Evolution tubes are titanium. The conical header tubes are joined through interference crossover tubes, and lead into the cylindrical collector via a sleeve joint. The collector leads in the same manner into the conical link pipe, which is attached via another sleeve joint to a further conical link pipe, which is welded to the muffler. All of the sleeve joints are secured using silicon-shielded springs. The systems also include a fitting for attaching a lambda sensor. The oval muffler is identical for both systems: titanium inlet cap and perforated inner sleeve, and carbon fiber outlet cap. The outer sleeve comes in titanium. The muffler is attached to the frame using a carbon fiber clamp and a metal bracket. The Street Legal versions include a noise damper installed in the muffler.

	PERFORMANCE		
	stock	AKRAPOVIC	max. increased power
max. rear wheel power HP / rpm <small>(measured on SuperFlow Cycle Dyn)</small>	115.3 / 7800	116.4 / 7750	6.2 / 5400

	CONFIGURATION		
	header tubes	collector	link pipe
material	TITANIUM (Evolution) STAINLESS STEEL (Racing)	TITANIUM (Evolution) STAINLESS STEEL (Racing)	TITANIUM - TITANIUM (Evolution) STAINLESS STEEL - TITANIUM (Racing)
tube shape	CONICAL	CYLINDRICAL	CONICAL

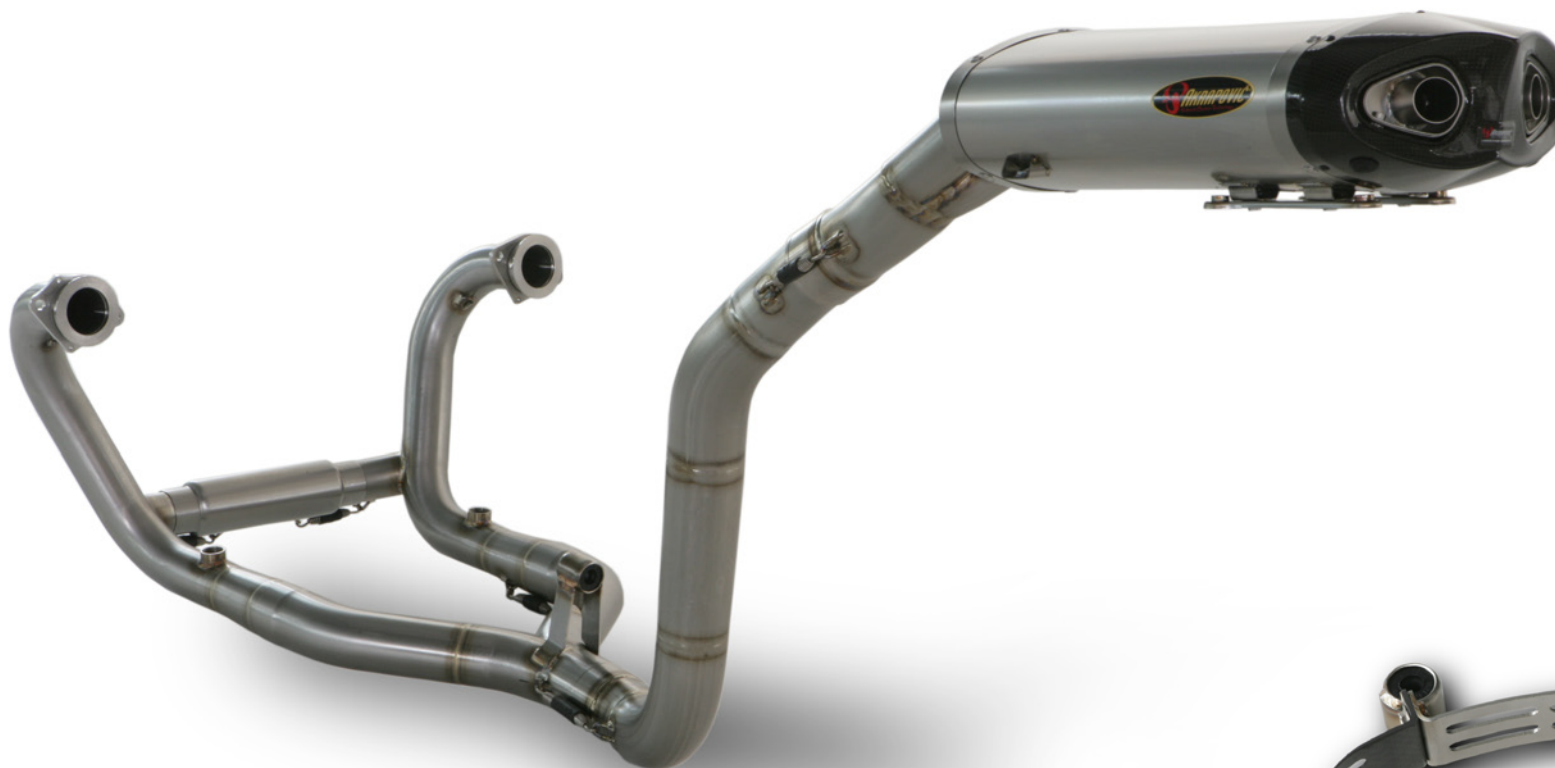
interference crossover tubes	YES	lambda sensor	YES
header tube inner sleeves	S.S. CNC MACHINED	header tube flanges	S.S. LASER CUT
header tubes - collector connection	SLEEVE JOINT + SILICON SHIELDED SPRINGS	collector / header tube - link pipe connection	SLEEVE JOINT + SILICON SHIELDED SPRINGS
link pipe - muffler connection	WELDED	muffler inlet cap /outlet cap	TITANIUM / CARBON-FIBER
muffler metal interior	TITANIUM	muffler outer sleeve	TITANIUM
muffler clamp	CARBON-FIBER	muffler bracket	STAINLESS STEEL
muffler insert	EU	NOISE DAMPER	-
	US	-	catalytic converter

	ADDITIONAL DATA				
	stock	AKRAPOVIC		difference	
		RACING	EVOLUTION	stock - RACING	stock - EVOLUTION
weight comparison (kg)	11.07	6.80	5.39	4.27	5.68
noise measurements (dB / rpm)	stock		AKRAPOVIC		
	89 / 4125		89 / 4125		
possibility of periodic service without removing A.E.S.	oil		oil filter		
	YES		YES		
legal for street use	YES (Street Legal version)				

Technical specifications of Akrapovic exhaust systems and related products subject to change without notice.

Product code: 105914 (S-B12R3-UT) Racing , 105919 (S-B12R3C-HUT) Racing Homologated
105915 (S-B12RFT3T-UT) Evolution , 105918 (S-B12RFT3TC-HUT) Evolution Homologated

Akrapovic Racing & Evolution Exhaust System for the BMW R 1200 S (2006)



MUFFLER CLAMP

Road
Program

Product code: 105914 (S-B12R3-UT) Racing , 105919 (S-B12R3C-HUT) Racing Homologated
105915 (S-B12RFT3T-UT) Evolution , 105918 (S-B12RFT3TC-HUT) Evolution Homologated

Akrapovic Racing & Evolution Exhaust System for the BMW R 1200 S (2006)

Akrapovic Exhaust System Technology copyright 2006, all rights reserved



Road Program

Product code: 105914 (S-B12R3-UT) Racing , 105919 (S-B12R3C-HUT) Racing Homologated
105915 (S-B12RFT3T-UT) Evolution , 105918 (S-B12RFT3TC-HUT) Evolution Homologated

Akrapovic Racing & Evolution Exhaust System for the BMW R 1200 S (2006)

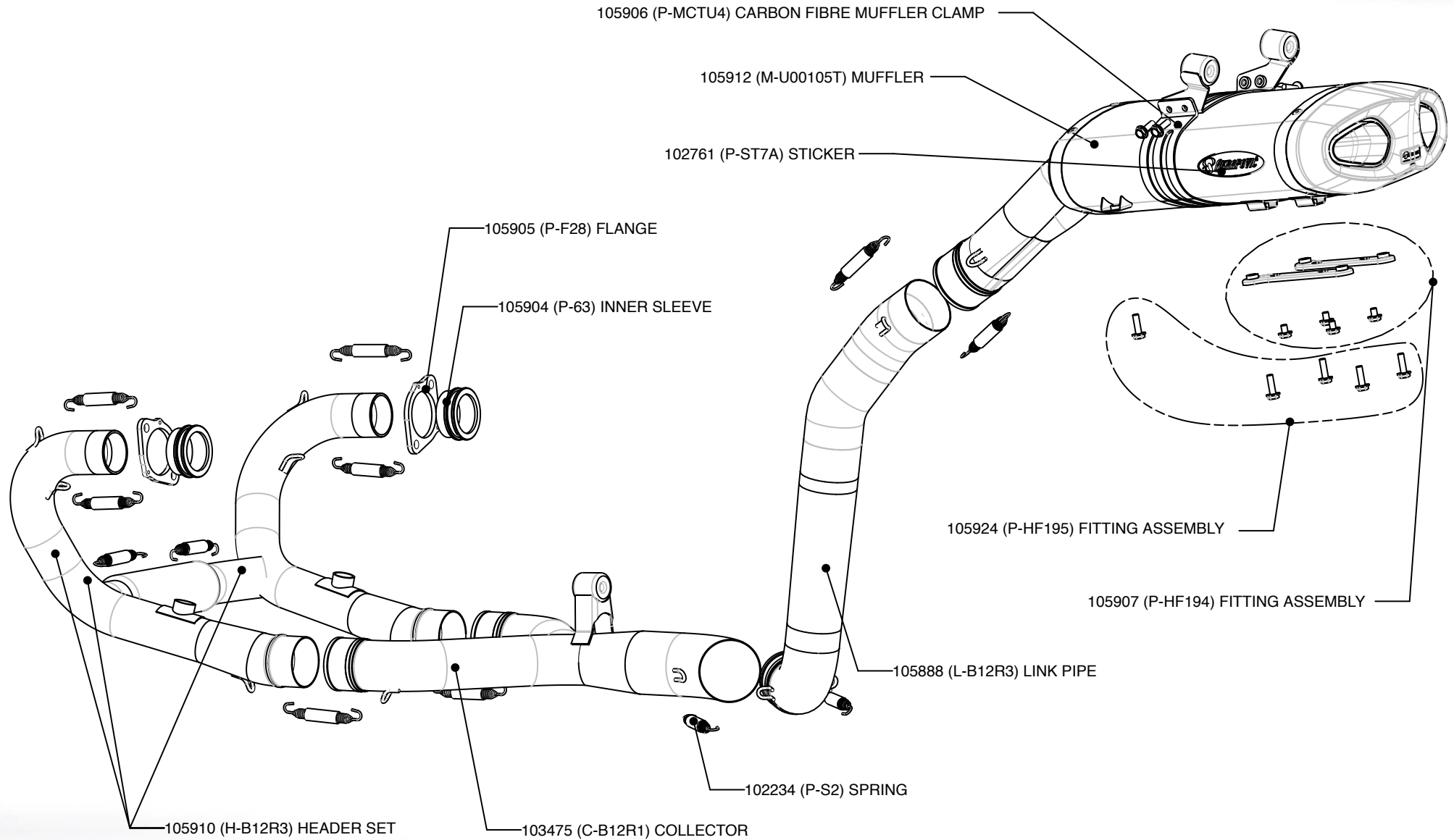


Akrapovic Exhaust System Technology copyright 2006, all rights reserved

Road Program

Product code: 105914 (S-B12R3-UT) Racing , 105919 (S-B12R3C-HUT) Racing Homologated
105915 (S-B12RFT3T-UT) Evolution , 105918 (S-B12RFT3TC-HUT) Evolution Homologated

Akrapovic Racing & Evolution Exhaust System for the BMW R 1200 S (2006)



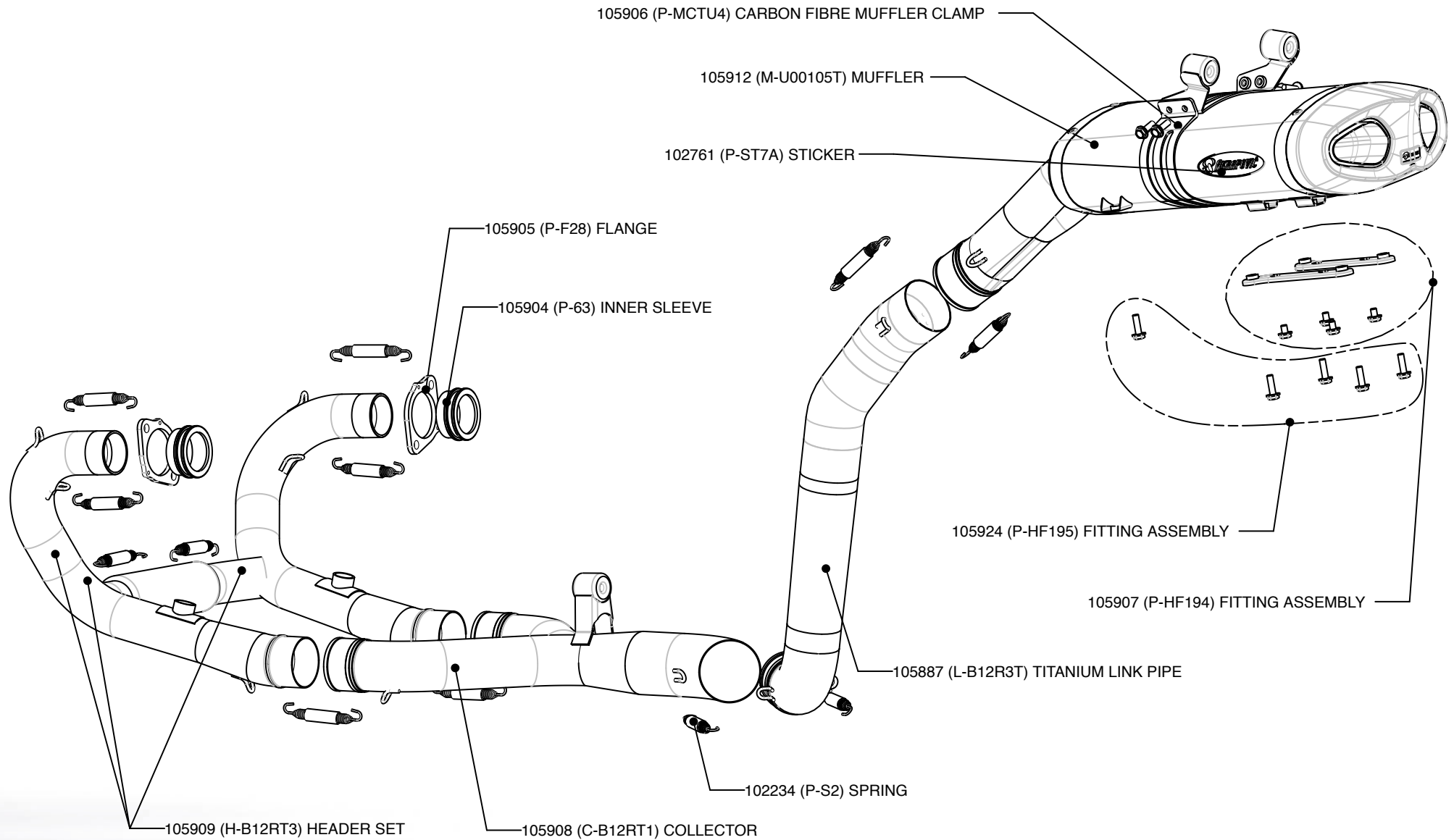
Akrapovic Exhaust System Technology copyright 2006, all rights reserved

Road Program

Product code: 105914 (S-B12R3-UT) Racing



Akrapovic Racing & Evolution Exhaust System for the BMW R 1200 S (2006)

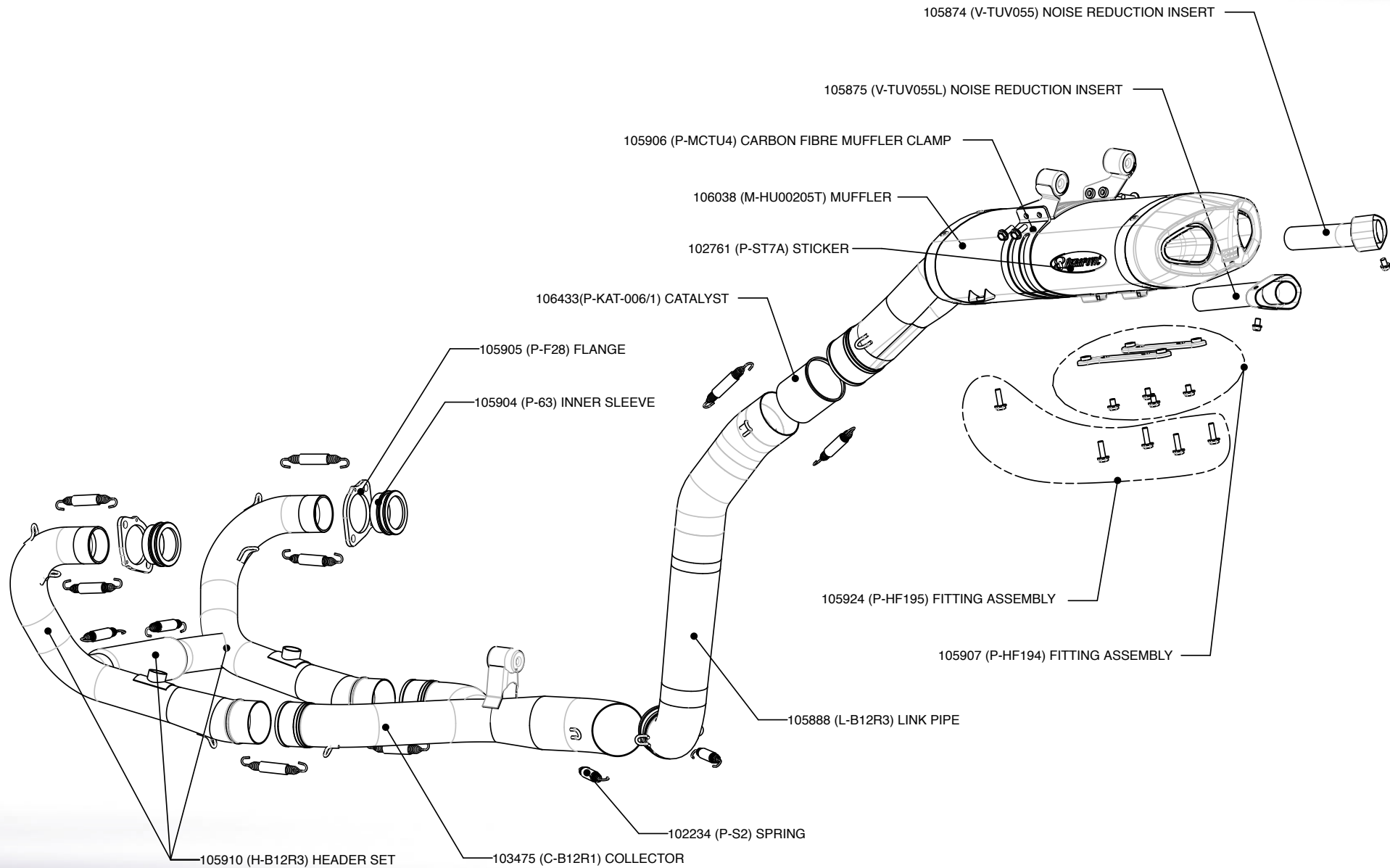


Akrapovic Exhaust System Technology copyright 2006, all rights reserved

Road Program

Product code: 105915 (S-B12RFT3T-UT) Evolution

Akrapovic Racing & Evolution Exhaust System for the BMW R 1200 S (2006)



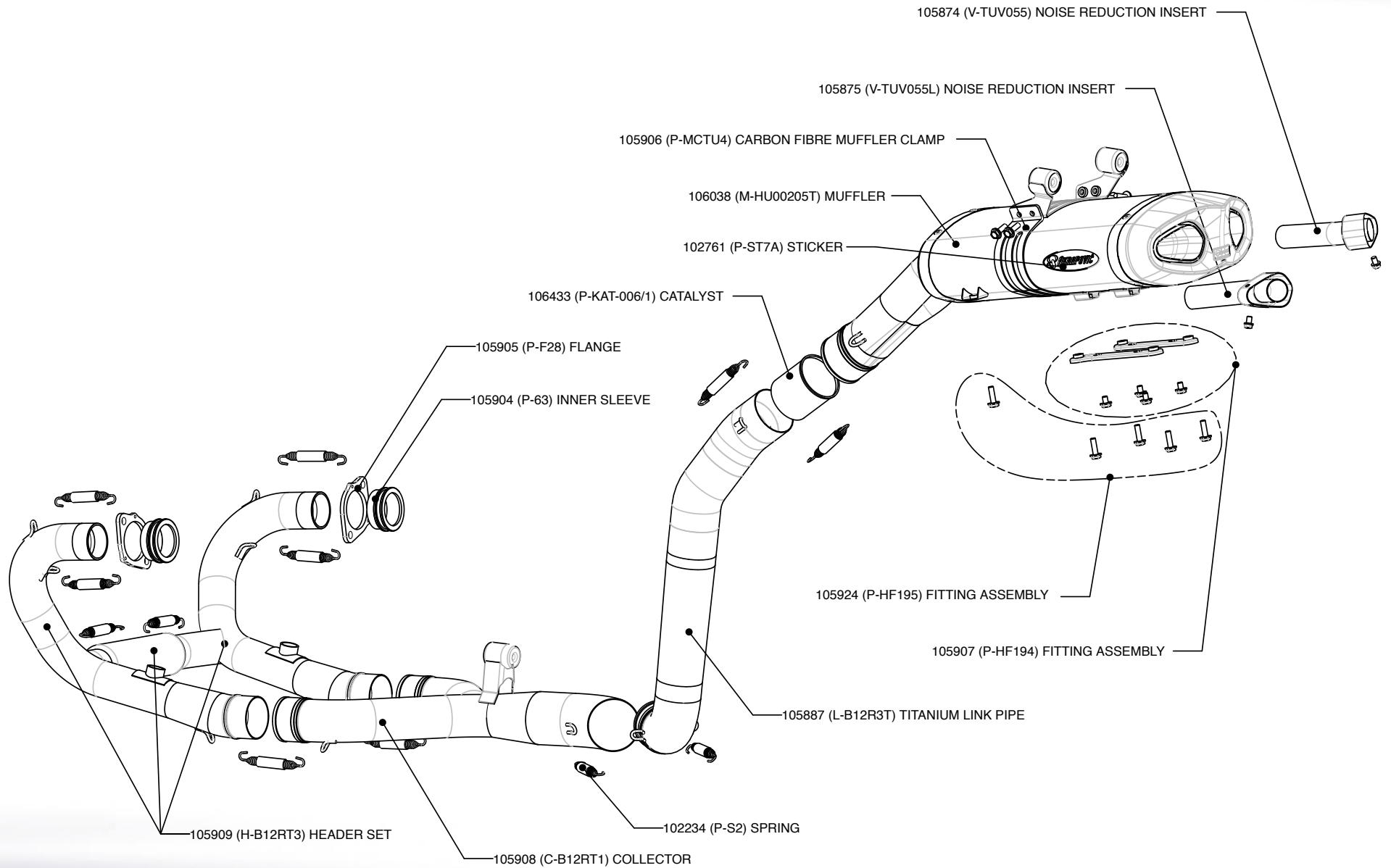
Akrapovic Exhaust System Technology copyright 2006, all rights reserved

Road Program

Product code: 105915 (S-B12RFT3T-UT) Evolution



Akrapovic Racing & Evolution Exhaust System for the BMW R 1200 S (2006)

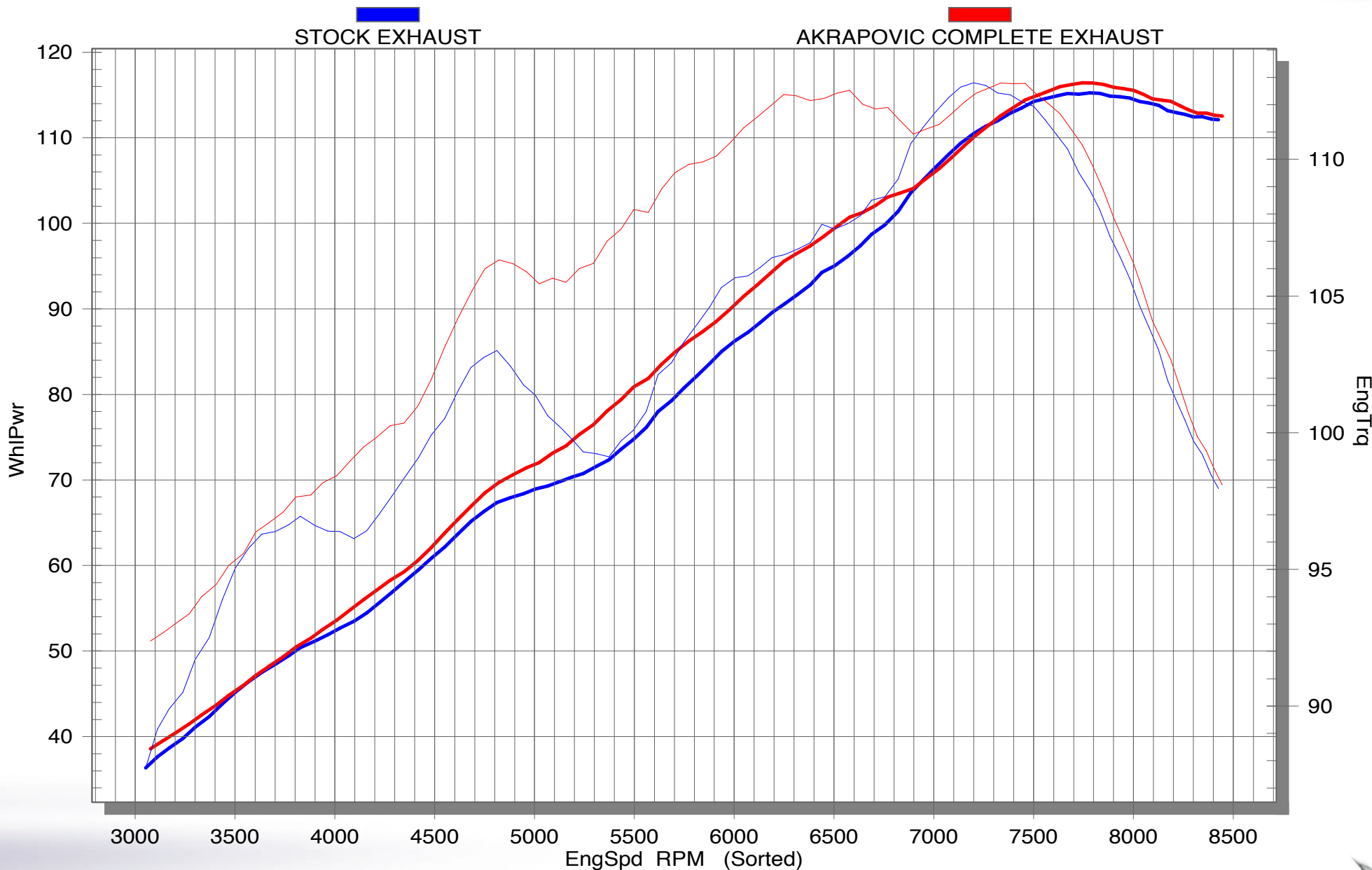


Akrapovic Exhaust System Technology copyright 2006, all rights reserved

Road Program

Product code: 105918 (S-B12RFT3TC-HUT) Evolution Homologated

Akrapovic Racing & Evolution Exhaust System for the BMW R 1200 S (2006)



Akrapovic Exhaust System Technology copyright 2006, all rights reserved

Road Program

Product code: 105914 (S-B12R3-UT) Racing , 105919 (S-B12R3C-HUT) Racing Homologated
105915 (S-B12RFT3T-UT) Evolution , 105918 (S-B12RFT3TC-HUT) Evolution Homologated

