



BMW R 1200 S (2006)

Slip-On Exhaust System

Akrapovic Slip-On Exhaust System

for the BMW R 1200 S (2006)

BMW R 1200S enthusiasts who want to upgrade their exhaust system should look no further than the Akrapovic Slip-On system. As a base-level tuning component it offers and excellent combination of performance, production quality and affordability, as well as stylish visual enhancement. More racing-oriented riders should look at our Racing or Evolution system. The Street Legal versions of the systems include noise dampers.

PERFORMANCE

Measurements of the Akrapovic SLIP-ON system on the BMW R 1200 S (without noise damper):

Power & Torque: the Akrapovic Slip-On system provides increased power and torque at the top end of the range, from 5500 rpm on, enhancing the sports character of the R 1200 S. Max. power at 7900 rpm is 117.1 HP. If you need more power than this, we also offer Racing and Evolution complete exhaust systems.

CONFIGURATION

The Akrapovic SLIP-ON system is composed of a free-floating conical link pipe and a second link pipe welded to the muffler. The titanium link pipes are held together using a sleeve joint secured with silicon-shielded springs. The Akrapovic link pipe is also attached to the stock header assembly with a sleeve joint secured with silicon-shielded springs. The muffler comes with a titanium outer sleeve. The muffler interior and inlet cap are made entirely of titanium, while the outlet cap is made of carbon fiber. The muffler is attached to the frame using an Akrapovic carbon fiber clamp and a metal bracket. The Street Legal version includes a noise damper installed in the muffler.

	PERFORMANCE		
	stock	AKRAPOVIC	max. increased power
max. rear wheel power HP / rpm (measured on Dynojet ATV)	115.3 / 7800	117.1 / 7900	2.8 / 8300

	CONFIGURATION		
	header tubes	collector	link pipe
material	-	-	TITANIUM / TITANIUM
tube shape	-	-	CONICAL

interference crossover tubes	-	lambda sensor	-
header tube inner sleeves	-	header tube flanges	-
header tubes - collector connection	-	collector / header tube - link pipe connection	SLEEVE JOINT + SILICON SHIELDED SPRINGS
link pipe - muffler connection	WELDED	muffler inlet cap / outlet cap	TITANIUM / CARBON-FIBER
muffler metal interior	TITANIUM	muffler outer sleeve	TITANIUM
muffler clamp	CARBON-FIBER	muffler bracket	STAINLESS STEEL
muffler insert	EU	NOISE DAMPER	-
	US	-	catalytic converter

	ADDITIONAL DATA				
	stock	AKRAPOVIC		difference	
		S.S. link pipe	TITANIUM link pipe	stock - S.S.	stock - titanium
weight comparison (kg)	6.10	-	3.51	-	2.59
noise measurements (dB / rpm)	stock		AKRAPOVIC		
	89 / 4125		89 / 4125		
possibility of periodic service without removing A.E.S.	oil		oil filter		
	YES		YES		
legal for street use	YES (Street Legal version)				

Technical specifications of Akrapovic exhaust systems and related products subject to change without notice.

Product code: 105920 (S-B12SO4T-UT)
105921 (S-B12SO4T-HUT) homologated

Akrapovic Slip-On Exhaust System

for the BMW R 1200 S (2006)



MUFFLER CLAMP

Product code: 105920 (S-B12SO4T-UT)
105921 (S-B12SO4T-HUT) homologated

Akrapovic Slip-On Exhaust System for the BMW R 1200 S (2006)



Akrapovic Exhaust System Technology copyright 2006, all rights reserved

Road Program

Product code: 105920 (S-B12SO4T-UT)
105921 (S-B12SO4T-HUT) homologated

Akrapovic Slip-On Exhaust System for the BMW R 1200 S (2006)

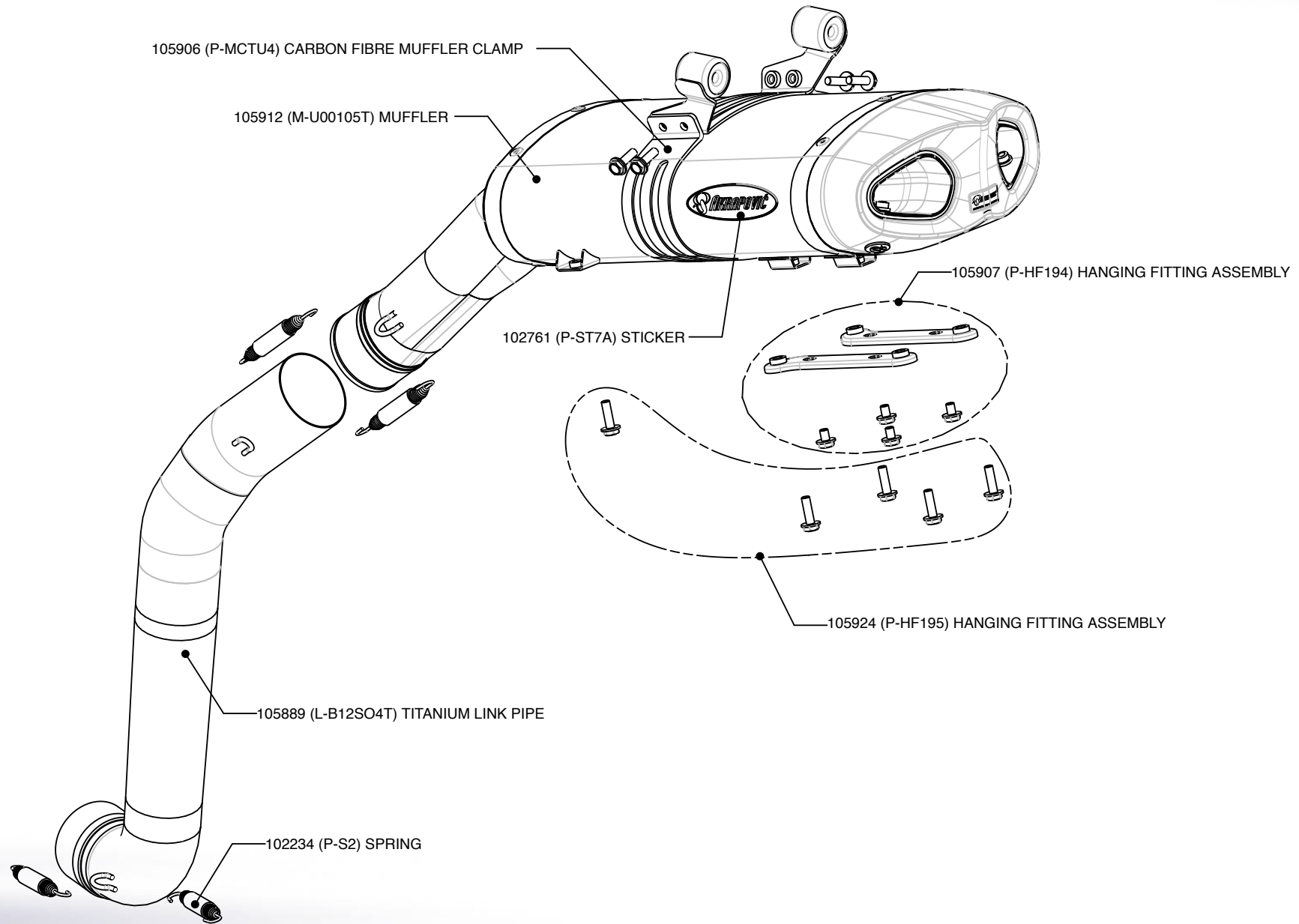


Akrapovic Exhaust System Technology copyright 2006, all rights reserved

Road Program

Product code: 105920 (S-B12SO4T-UT)
105921 (S-B12SO4T-HUT) homologated

Akrapovic Slip-On Exhaust System for the BMW R 1200 S (2006)

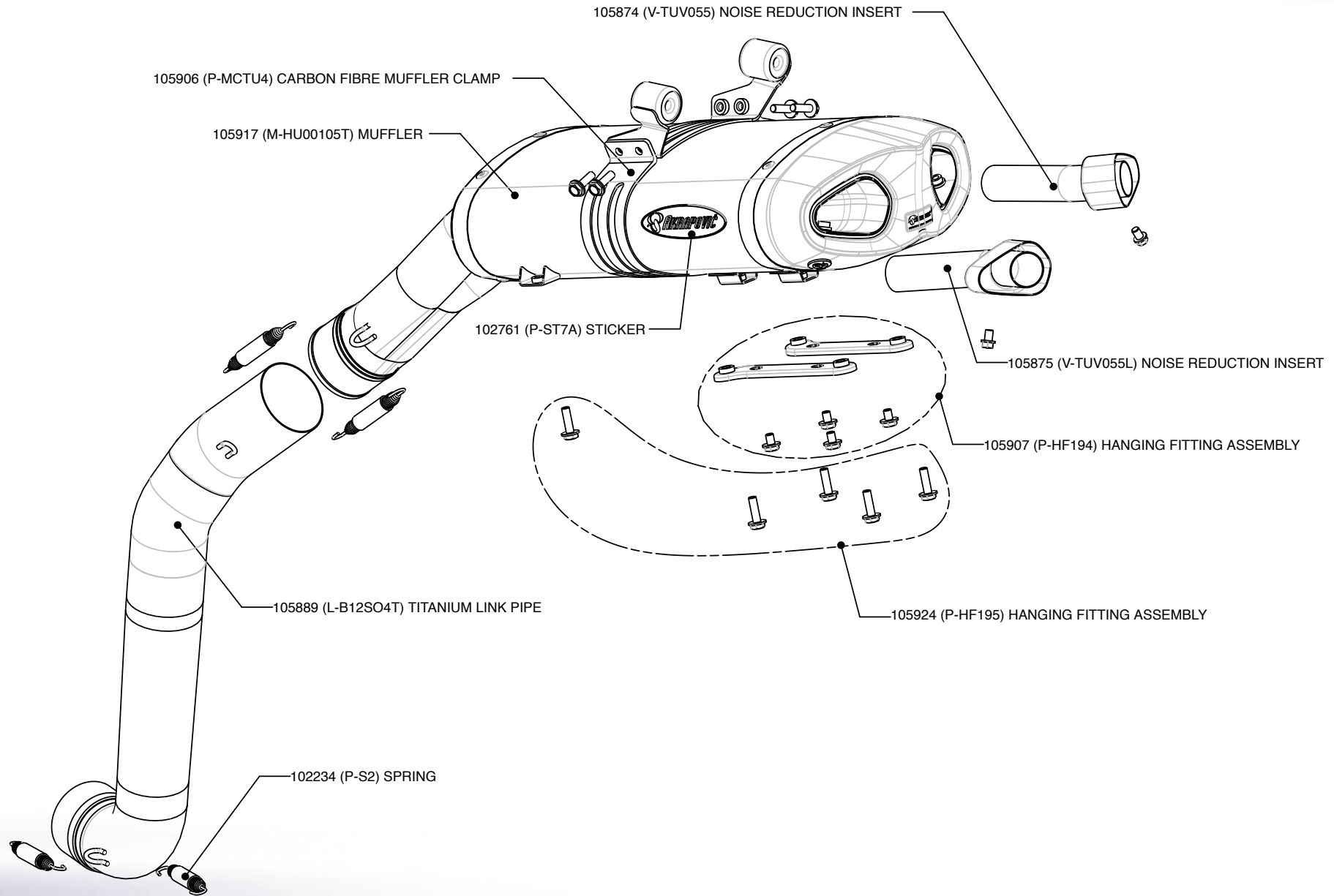


Akrapovic Exhaust System Technology copyright 2006, all rights reserved

Road
Program

Product code: 105920 (S-B12SO4T-UT)

Akrapovic Slip-On Exhaust System for the BMW R 1200 S (2006)



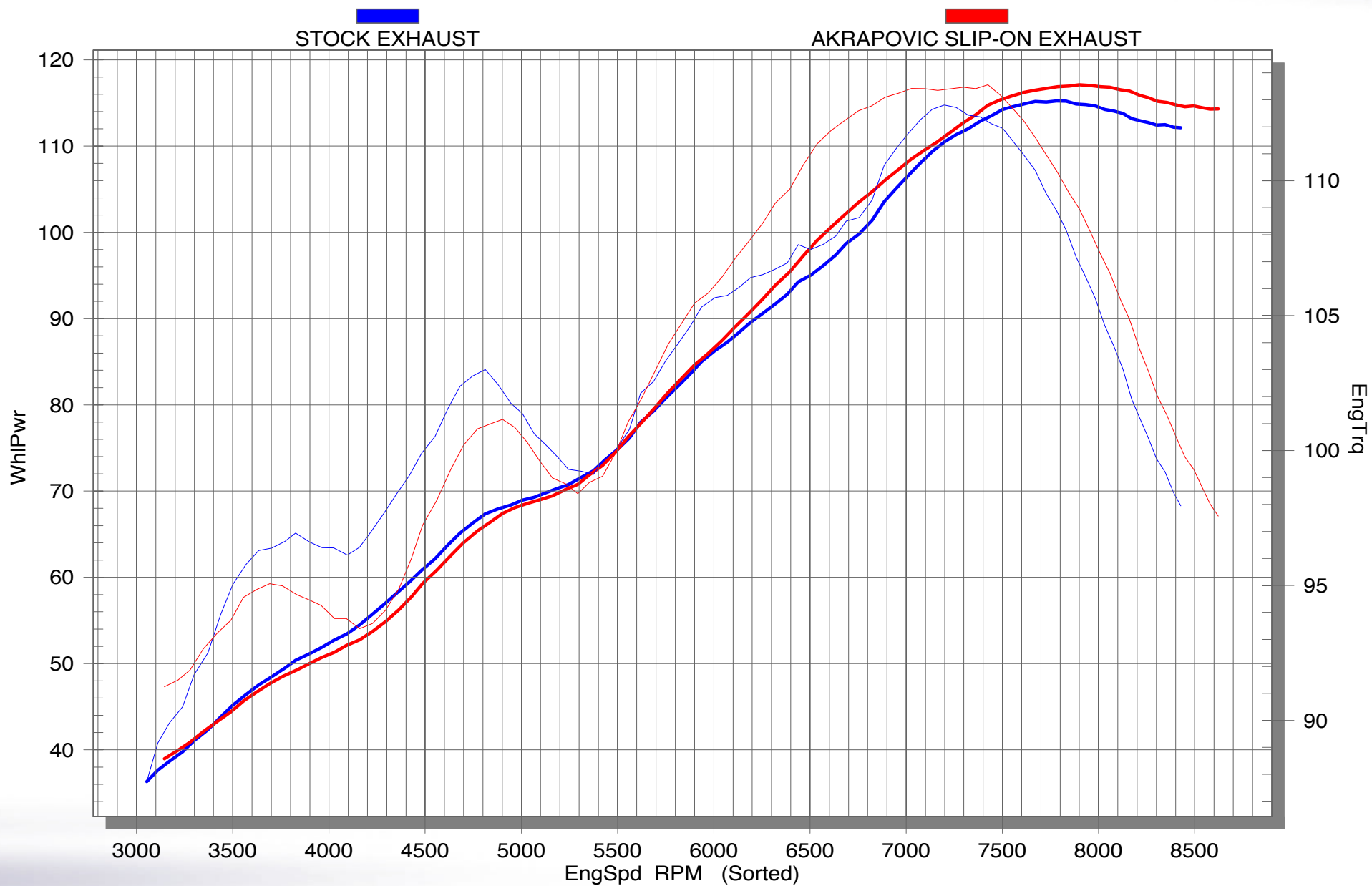
Akrapovic Exhaust System Technology copyright 2006, all rights reserved

Road Program

Product code: 105921 (S-B12SO4T-HUT) homologated



Akrapovic Slip-On Exhaust System for the BMW R 1200 S (2006)



Akrapovic Exhaust System Technology copyright 2006, all rights reserved

Road Program

Product code: 105920 (S-B12SO4T-UT)
105921 (S-B12SO4T-HUT) homologated

