



Honda CBR 900 RR (2002, 2003)

Racing / Evolution Exhaust System

Akrapovic Racing / Evolution Exhaust System

for the Honda CBR 900 RR (2002, 2003)

The CBR 900 is a motorcycle which does not disappoint: fun to ride, excellent handling characteristics, a fluid and powerful engine, and controls right where you want them. A great bike in terms of both quality and performance. More than ten years on the market are proof of the soundness of the original design of this light, intuitive bike, which was developed above all to deliver great handling. But it is more than just a smooth ride; it can be a true wolf in sheep's clothing and has been surprisingly successful on the racetrack.

GOAL

Do you like to see the asphalt from different angles? Do you enjoy pushing the limits of your machine and challenging the laws of physics, crouched low over the frame? Do most people have difficulty understanding the attraction of this challenge? We understand it perfectly! For years we have been part of and grown with the successes of those who have used our exhaust systems. We understand the requirements of the merciless asphalt pistes, and we have developed complete RACING and EVOLUTION line exhaust systems for your Honda CBR 900 RR. With either of these systems, you receive a hardened warrior in the battle against the clock.

ABOUT AKRAPOVIC RACING & EVOLUTION SYSTEMS

Before we begin describing the systems, some similarities should be mentioned. Both systems were developed on stock set-up bikes (frame and motor) and require no additional modifications. They are also of identical construction. The only difference is in material, which is reflected only in the weight of the system. Due to the use of titanium the weight savings are greater for the EVOLUTION system. Both systems are available with fittings for installing a lambda sensor (EVOLUTION with original or racing fitting, while RACING with original or without fitting).

The RACING and EVOLUTION systems are both designed to provide performance at high speeds. This means quick, responsive power and torque at the top of the power band where the engine has to deliver the most.

The system is built in 4-2-1 construction and is made of conical elements welded together with filigree welds. Conical construction guarantees maximum utilization of the flow of the exhaust gases in both systems. Since the results of testing showed no advantage with the use of interference crossover tubes across the headers, they are not installed in the systems. The RACING line system is made of stainless steel, while the EVOLUTION line system is made of titanium.

Both systems include high-quality silicon-shielded springs for joining the parts of the header assembly, while the muffler is attached to the stock chassis hanging bracket with a high-quality carbon-fiber clamp. We offer a carbon-fiber hanging bracket as an option for both systems. The carbon-fiber hanging bracket ensures maximum compactness and lighter weight.

Technical specifications of Akrapovic exhaust systems and related products subject to change without notice.

	stock	AKRAPOVIC		difference	
weight comparison	8.70 kg	S.S.	titanium	stock - S.S.	stock - titanium
		5.25 kg	4.35 kg	3.45 kg	4.35 kg
max. rear wheel power	131.5 HP / 11200 RPM	141.5 HP / 11600 RPM		11.5 HP / 11800 RPM*	
noise measurement	92 db / 5625 RPM	100 db / 5625 RPM		8 db / 5625 RPM	
periodic service possibilities without taking off A.E.S.	oil			oil filter	
	YES			NO	
legal for street use	NO				

*MAXIMUM MEASURED POWER DIFFERENCE

NOTE:

Passenger footrests cannot be used when the carbon-fiber hanging bracket is installed.

The perforated inner sleeve, front and end caps of the muffler are made of titanium. You also have a choice of materials for the outer sleeve of the muffler: our exceptionally popular carbon-fiber option or exotic titanium. In both cases the performance of the system and the color and depth of the sound are the same; the only difference is the appearance.

Measured performance of the RACING and EVOLUTION system for the Honda CBR 900 RR:

• power:

a glance at the power curve reveals the character of the Akrapovic RACING and EVOLUTION systems. Exceptionally linear power transfer and leveling of stock motor oscillations throughout the range of the engine, especially in the range from 3200 to 4000 rpm. The greatest increase is achieved from 7000 rpm on, at the top of the power band, where the Akrapovic curve is much higher than the stock curve, continuing to grow all the way to 11600 rpm, where it reaches its maximum power of 141.5 HP, a pretty big jump from the stock 131.5 HP!

• torque:

the Akrapovic system smoothes out the fluctuating pull of the stock system in the area from 3000 – 4000 rpm, with a slight dropout which is the result of the characteristics of the motor, not the exhaust system. By smoothing out the sudden jumps in torque of the stock set-up, we make the motor and the bike more rider-friendly when a lot of torque is needed. The torque increases simultaneously with the increase in power as you go up the rpm range, making a significant improvement on the stock system.

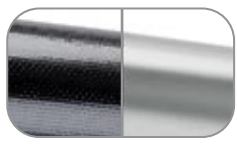
You will be amazed at how light the RACING system is when you hold it in your hands. If you like the sound of that, you should know that the EVOLUTION system is lighter still. We aim to ensure that our customers receive top-level parameters.

No matter whether you choose the RACING or the EVOLUTION system, you will receive top-quality components which are the fruit of the knowledge and experience of our development department. This has been gained through years of working together with numerous factory and private racing teams which use Akrapovic exhaust systems in extreme racing conditions. The proof is the famous scorpion on the logo, the deep penetrating sound and of course the high performance!

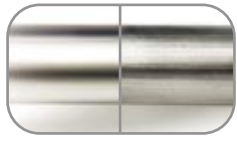
Product code: S-H9R3-C, S-H9R3-T, S-H9R3L-C, S-H9R3L-T,
S-H9RFT3TL-C, S-H9RFT3TL-T

Akrapovic Racing / Evolution Exhaust System

for the Honda CBR 900 RR (2002, 2003)



The outer sleeve is available in carbon-fiber or titanium



The header tubes are made of stainless steel (Racing Line) or titanium (Evolution Line)



PHOTO: AKRAPOVIC RACING LINE

Road Program



CARBON-FIBER MUFFLER CLAMP



ANTI-SEIZING GREASE (EVOLUTION LINE ONLY)

Product code: S-H9R3-C, S-H9R3-T, S-H9R3L-C, S-H9R3L-T, S-H9RFT3TL-C, S-H9RFT3TL-T



Akrapovic Exhaust System Technology copyright 2003, all rights reserved

Akrapovic Racing / Evolution Exhaust System

for the Honda CBR 900 RR (2002, 2003)

Akrapovic Exhaust System Technology copyright 2003, all rights reserved



Road Program

Product code: S-H9R3-C, S-H9R3-T, S-H9R3L-C, S-H9R3L-T, S-H9RFT3TL-C, S-H9RFT3TL-T

Akrapovic Racing / Evolution Exhaust System

for the Honda CBR 900 RR (2002, 2003)



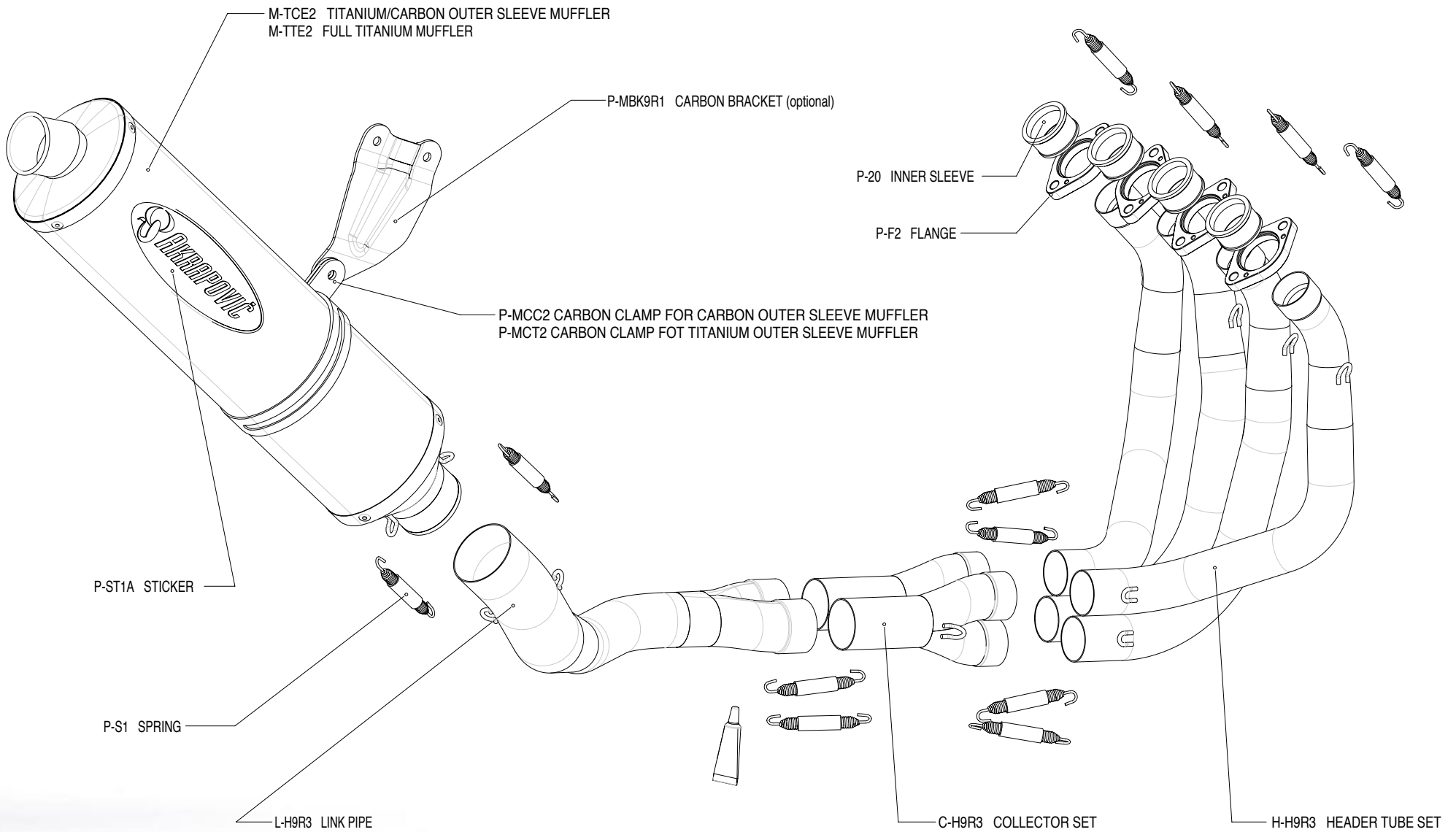
Akrapovic Exhaust System Technology copyright 2003, all rights reserved

Road Program

Product code: S-H9R3-C, S-H9R3-T, S-H9R3L-C, S-H9R3L-T,
S-H9RFT3TL-C, S-H9RFT3TL-T

Akrapovic Racing Exhaust System

for the Honda CBR 900 RR (2002, 2003)



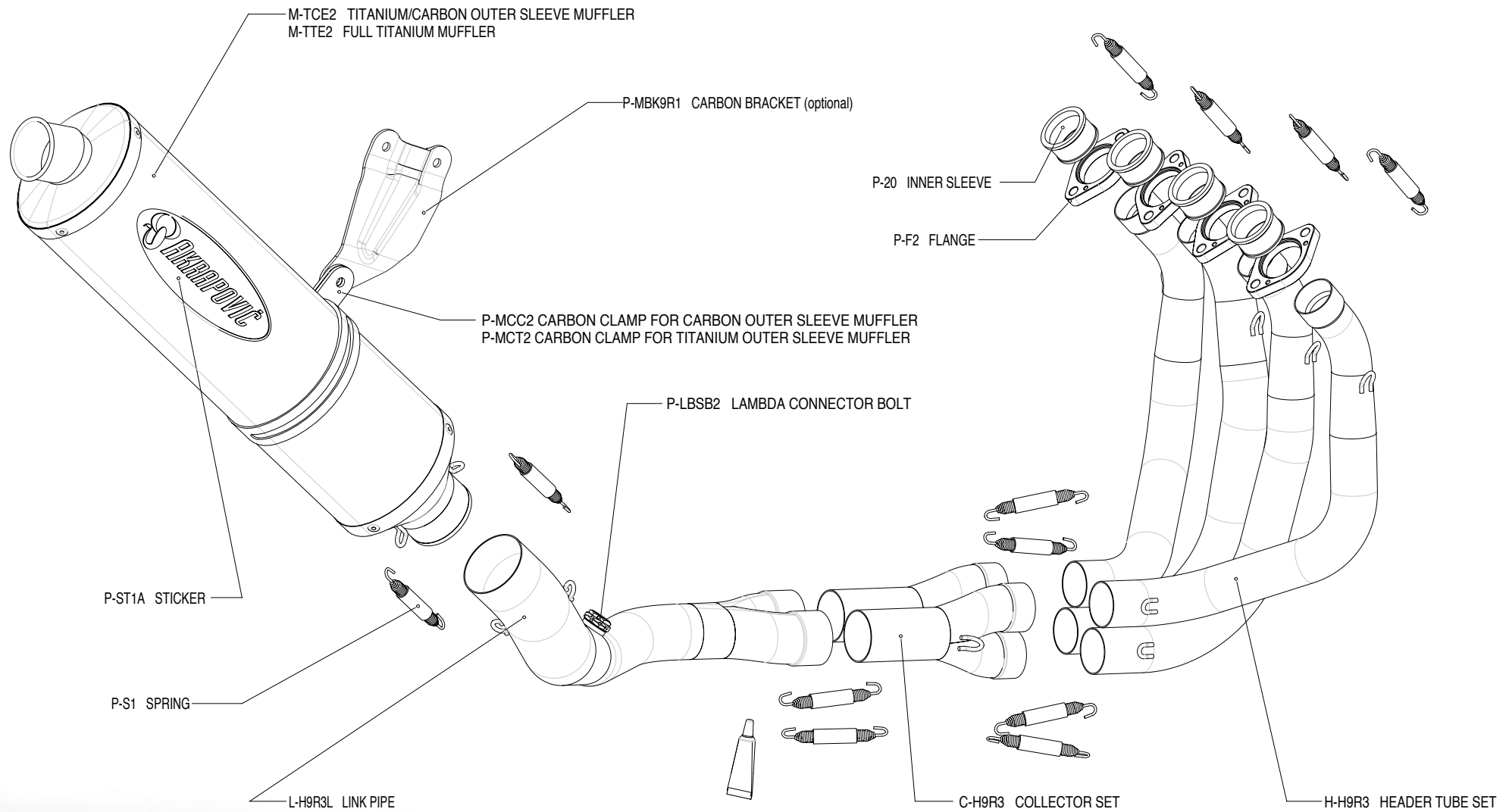
Akrapovic Exhaust System Technology copyright 2003, all rights reserved

Road Program



Akrapovic Racing Exhaust System

for the Honda CBR 900 RR (2002, 2003)

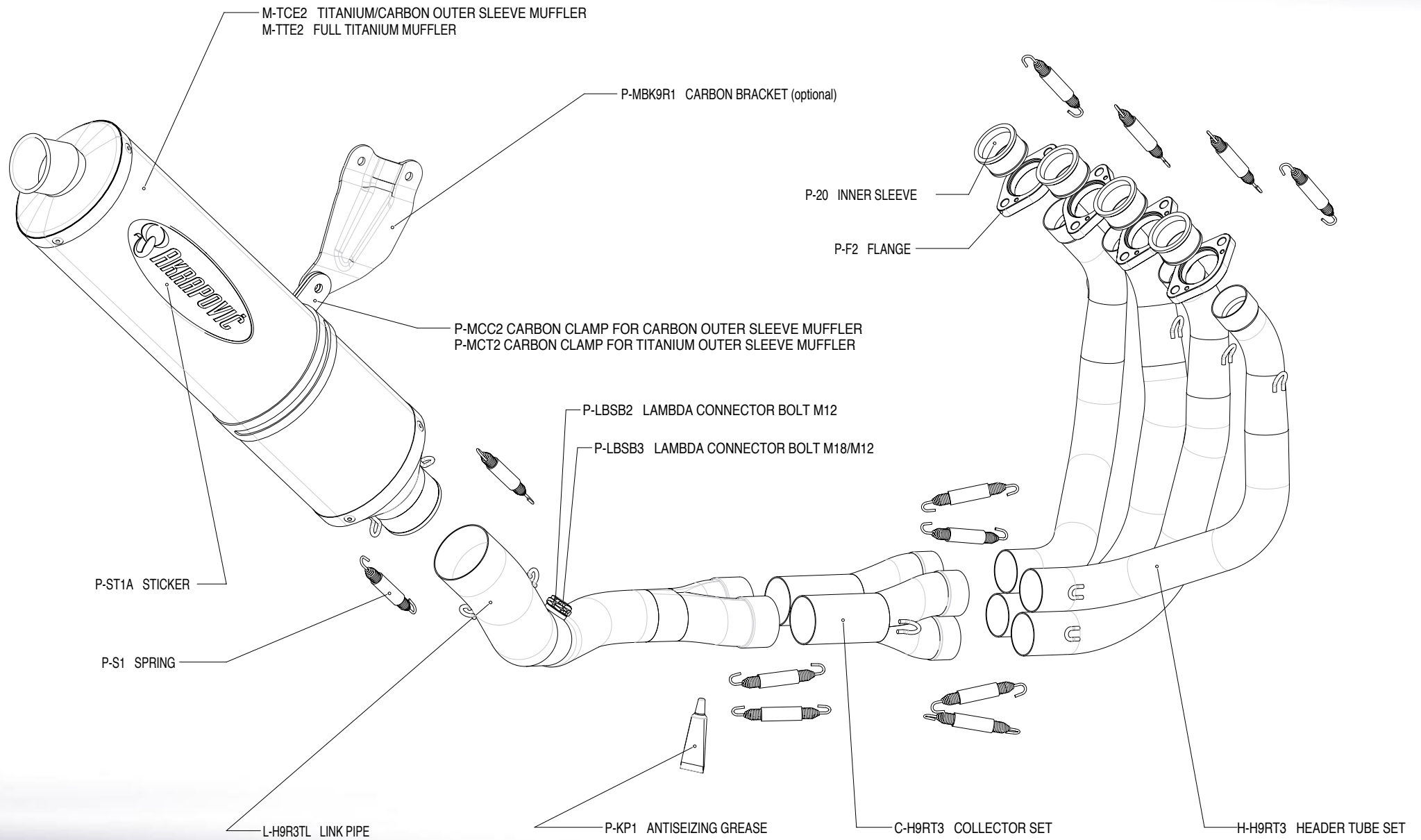


Akrapovic Exhaust System Technology copyright 2003, all rights reserved

Road Program

Akrapovic Evolution Exhaust System

for the Honda CBR 900 RR (2002, 2003)

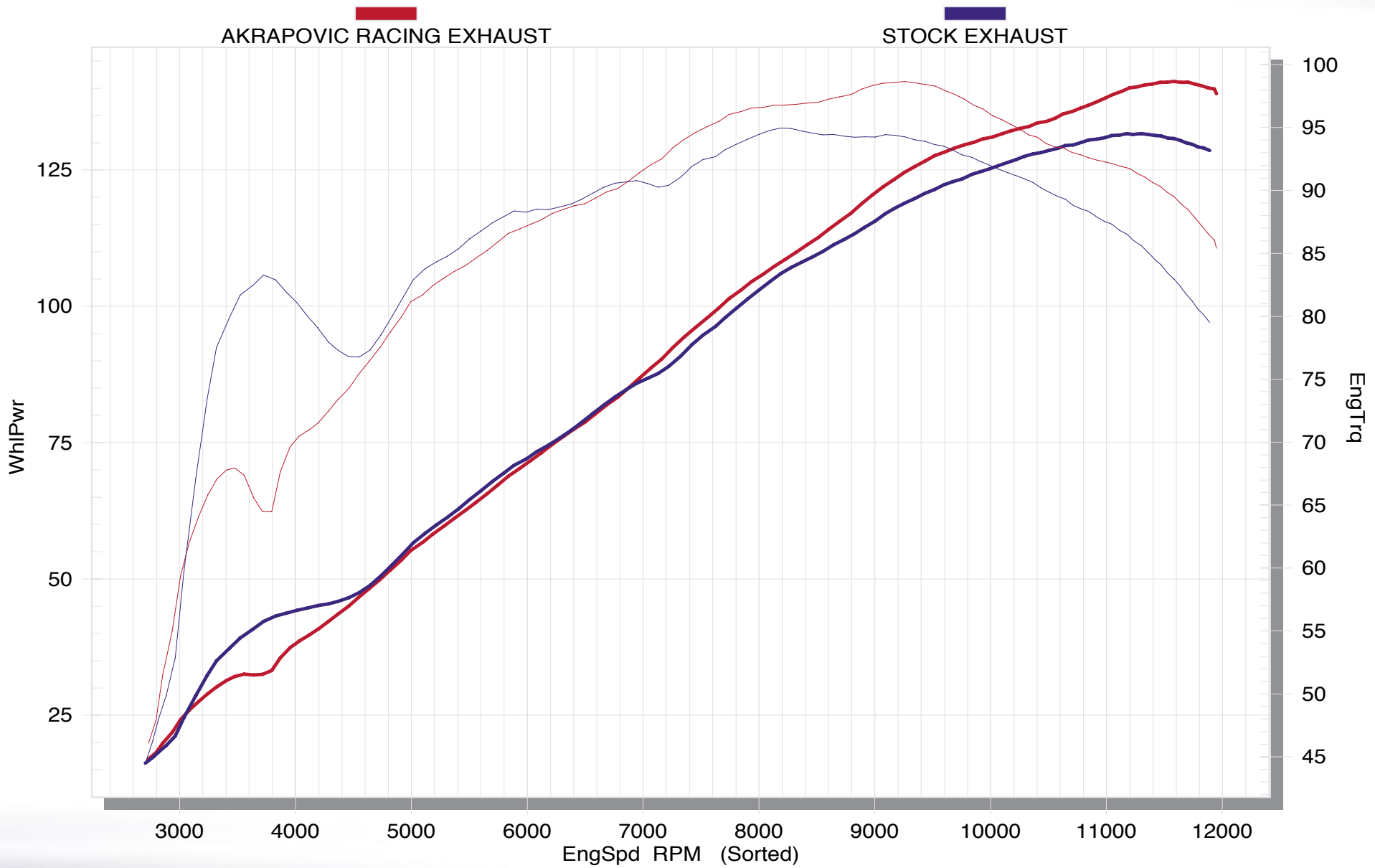


Akrapovic Exhaust System Technology copyright 2003, all rights reserved

Road Program

Akrapovic Racing / Evolution Exhaust System

for the Honda CBR 900 RR (2002, 2003)



Akrapovic Exhaust System Technology copyright 2003, all rights reserved

Road Program

Product code: S-H9R3-C, S-H9R3-T, S-H9R3L-C, S-H9R3L-T, S-H9RFT3TL-C, S-H9RFT3TL-T

