



KAWASAKI KX 450 F

(2008)

RACING & EVOLUTION EXHAUST SYSTEM

www.akrapovic.net

The Akrapovic Racing and Evolution complete exhaust systems are the flagships of our product lines. They are designed for competition-oriented MX riders who demand maximum performance from their exhaust systems. With their production quality, engine performance improvements and modern Hexagonal muffler design they satisfy the requirements of all riders. The systems are designed for two markets; in the US they are available with an approved spark arrester, and for the EU and other non-US markets they come with a noise damper. New for 2008 is additional chamber that helps to reduce noise emission and provides better power and torque at low rpm range.

PERFORMANCE

Measurements of the Akrapovic EVOLUTION system on the KAWASAKI KX 450 F (with muffler insert):

Power & Torque: The Akrapovic Evolution and Racing systems deliver a performance increase throughout nearly the entire rpm range. It is most pronounced in the bottom and the top of the range. The systems deliver increased torque similar to the power increase. Max. increased power of 3.1 HP was measured at 9850 rpm, while max. power of 50.4 HP was measured at 9150 rpm.

CONFIGURATION

The Akrapovic Racing and Evolution systems come with the unique Hexagonal offroad design muffler. They differ only in their selection of tubing material: the Racing uses stainless steel, and the Evolution uses titanium. The conical header tube with additional chamber is made of stainless steel (Racing) or titanium (Evolution). It is attached to the conical SS/titanium link pipe with a sleeve joint secured with a silicon-shielded spring. The link pipe is welded to the muffler. The inlet cap and the inner perforation are made of the same material as the link pipe, i.e. stainless steel (Racing) or titanium (Evolution). The outlet cap is made of carbon-fiber for evolution and composite polymer for Racing system. The muffler outer sleeve is available in either titanium or carbon-fiber. The system is attached to the motorcycle with Akrapovic carbon-fiber clamps. It also includes an Akrapovic carbon-fiber heat shield. The system includes a noise damper for the European market, and an approved spark arrester for the US market, which is indicated on the muffler with a laser engraving.

	PERFORMANCE		
	stock	AKRAPOVIC	max. increased power
max. rear wheel power HP / rpm <small>(measured on Dynojet ATV)</small>	48.2 / 8700	50.4 / 9150	3.1 / 9850

	CONFIGURATION		
	header tubes	collector	link pipe
material	STAINLESS STEEL / TITANIUM	-	STAINLESS STEEL / TITANIUM
tube shape	CONICAL	-	CONICAL

interference crossover tubes	NO (CHAMBER)		lambda sensor	NO
header tube inner sleeves	S.S.		header tube flanges	S.S. laser cut
header tubes - collector connection	-		collector / header tube - link pipe connection	SLEEVE JOINT + SILICON SHIELDED SPRING
link pipe - muffler connection	WELDED		muffler inlet cap /outlet cap	S.S - Ti / composite polymer - carb.fiber
muffler metal interior	STAINLESS STEEL / TITANIUM		muffler outer sleeve	TITANIUM (RACING) TITANIUM or CARBON (EVO)
muffler clamp	CARBON-FIBER		muffler bracket	-
muffler insert	EU	NOISE DAMPER	heat shield	Carbon - fiber
	US	SPARK ARRESTER	catalytic converter	NO

	ADDITIONAL DATA				
	stock	AKRAPOVIC		difference	
		S.S. link pipe	TITANIUM link pipe	stock - S.S.	stock - titanium
weight comparison (kg)	3.53	3.09	2.58	0.44	0.95
noise measurements (dB / rpm)	stock		AKRAPOVIC		
	94 / 4500		94 / 4500		
possibility of periodic service without removing A.E.S.	oil		oil filter		
	YES		YES		
legal for street use	NO				

Technical specifications of Akrapovic exhaust systems and related products subject to change without notice.



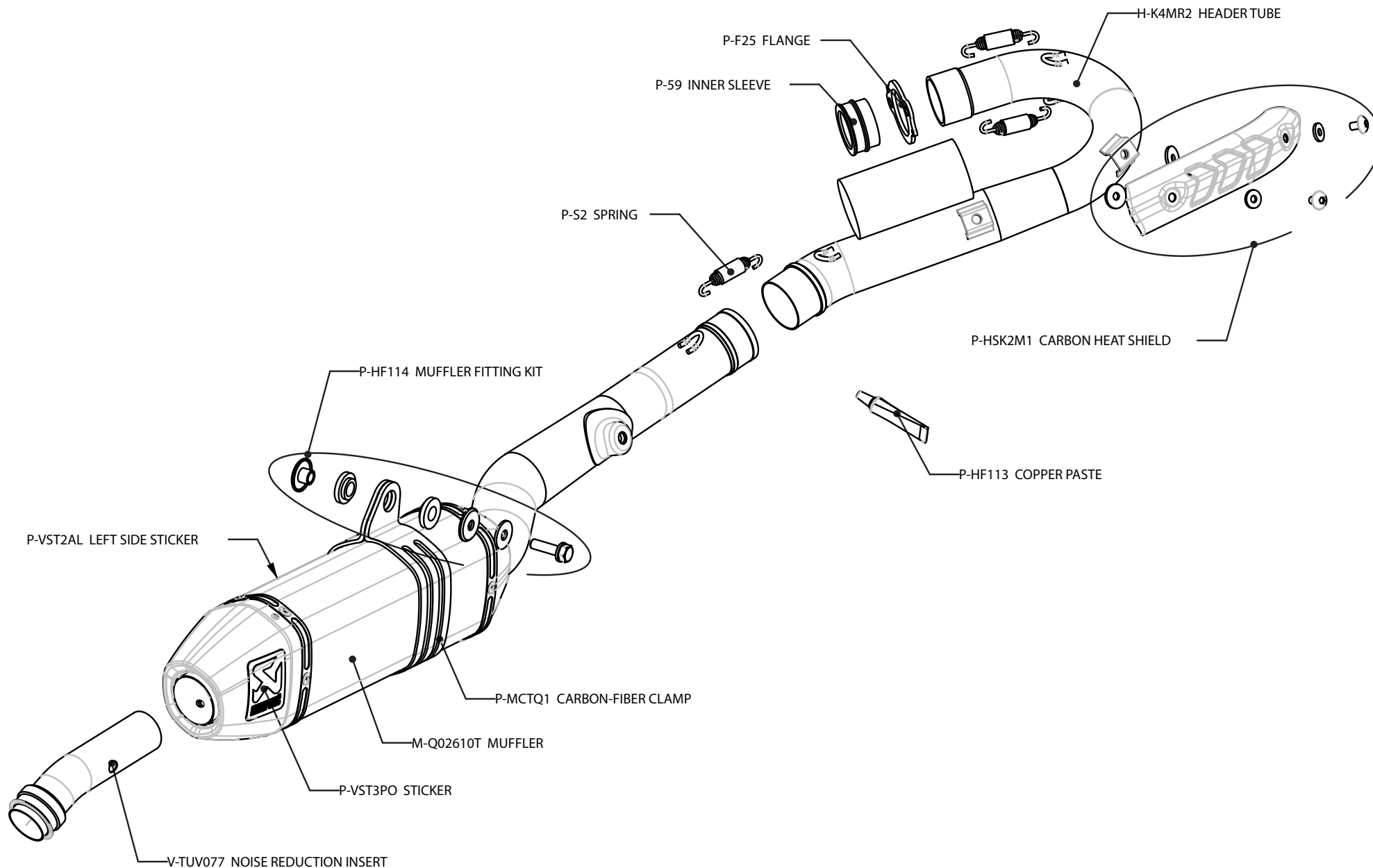
Product code: (108832) S-K4MR3-QT racing, (108840) S-K4MR3-QTA racing spark arrester
(108833) S-K4MET3-QT evolution, (108841) S-K4MET3-QTA evolution spark arrester



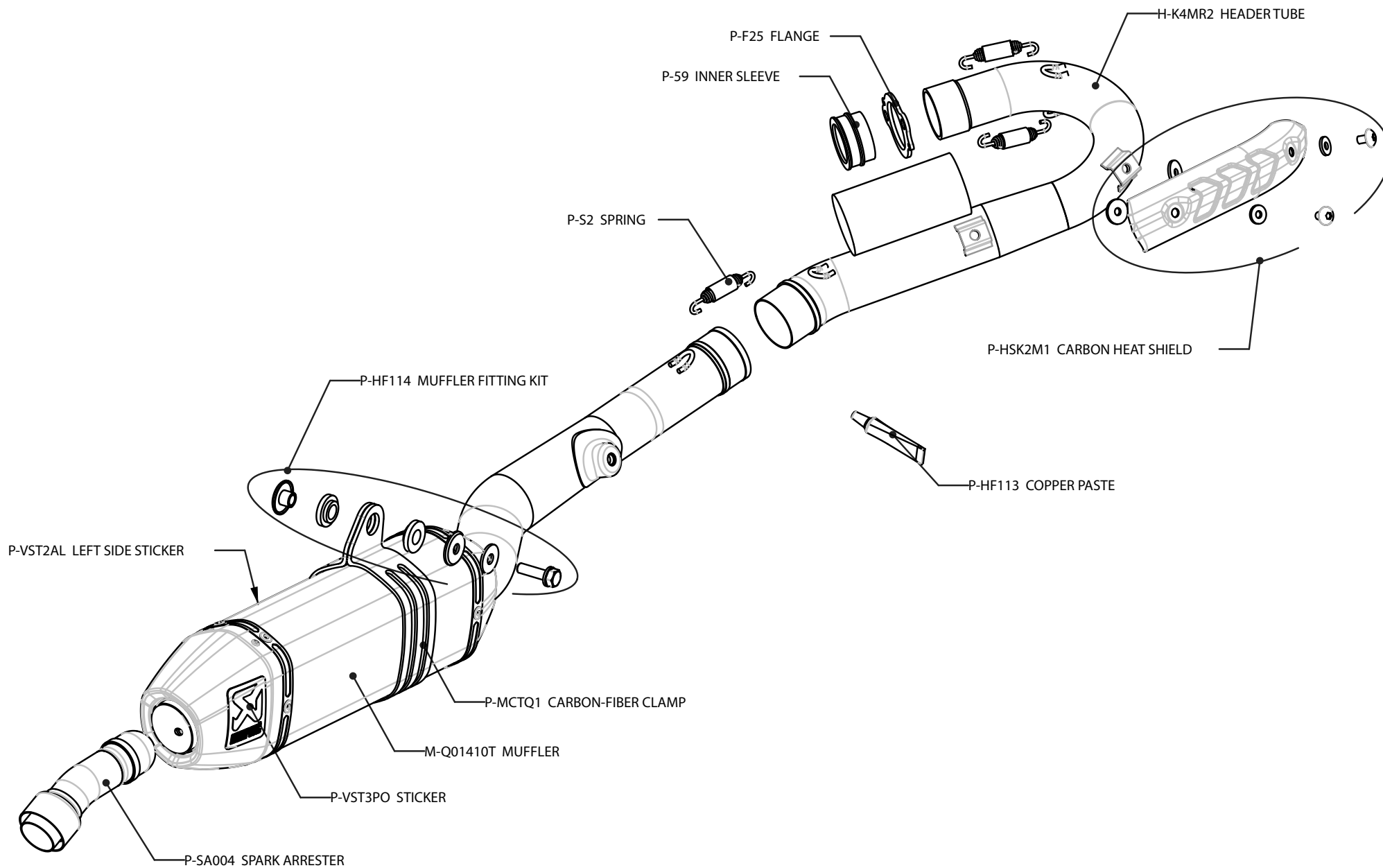
Product code: (108832) S-K4MR3-QT racing, (108840) S-K4MR3-QTA racing spark arrester
(108833) S-K4MET3-QT evolution, (108841) S-K4MET3-QTA evolution spark arrester



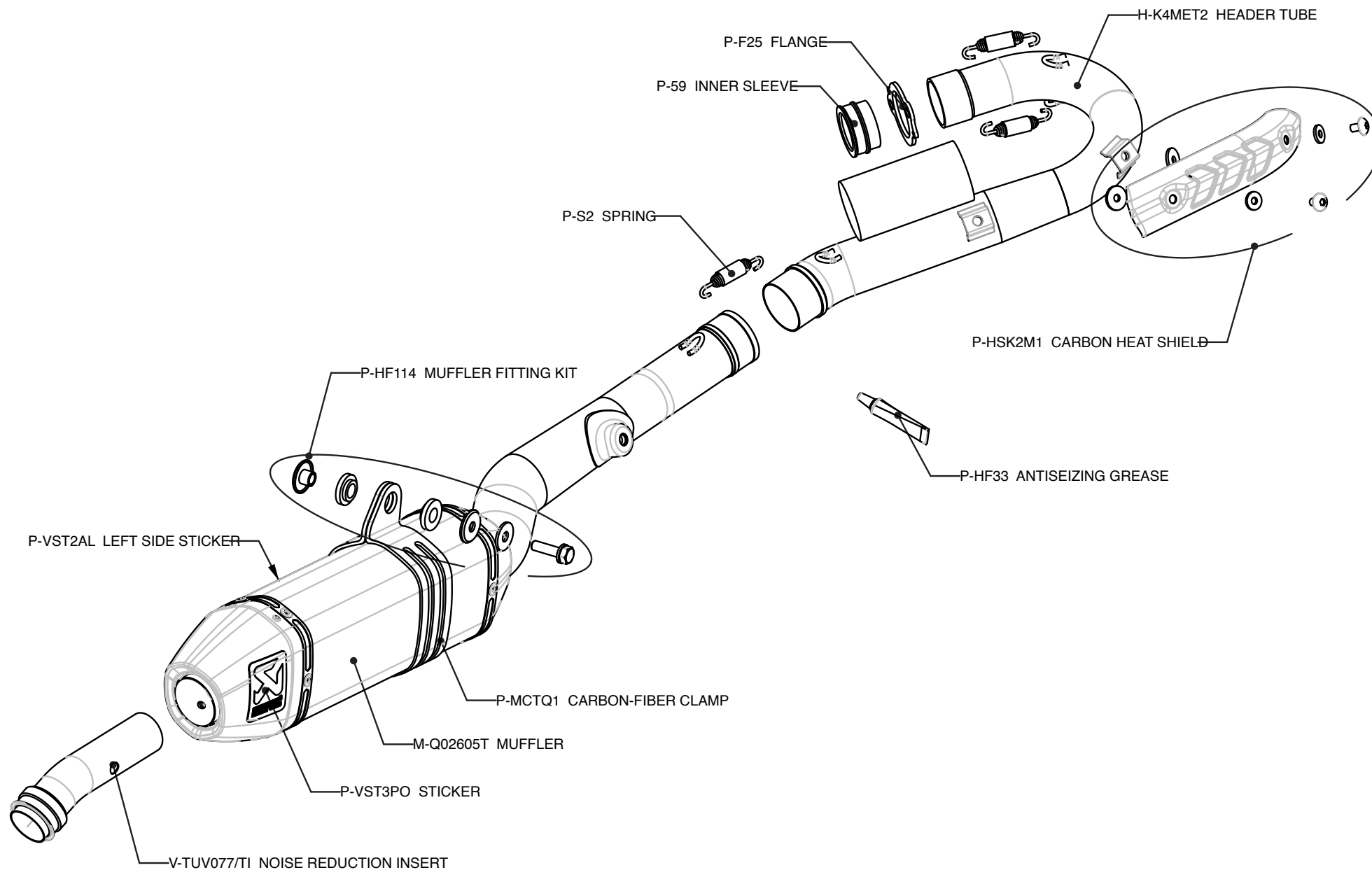
Product code: (108832) S-K4MR3-QT racing, (108840) S-K4MR3-QTA racing spark arrester
(108833) S-K4MET3-QT evolution, (108841) S-K4MET3-QTA evolution spark arrester



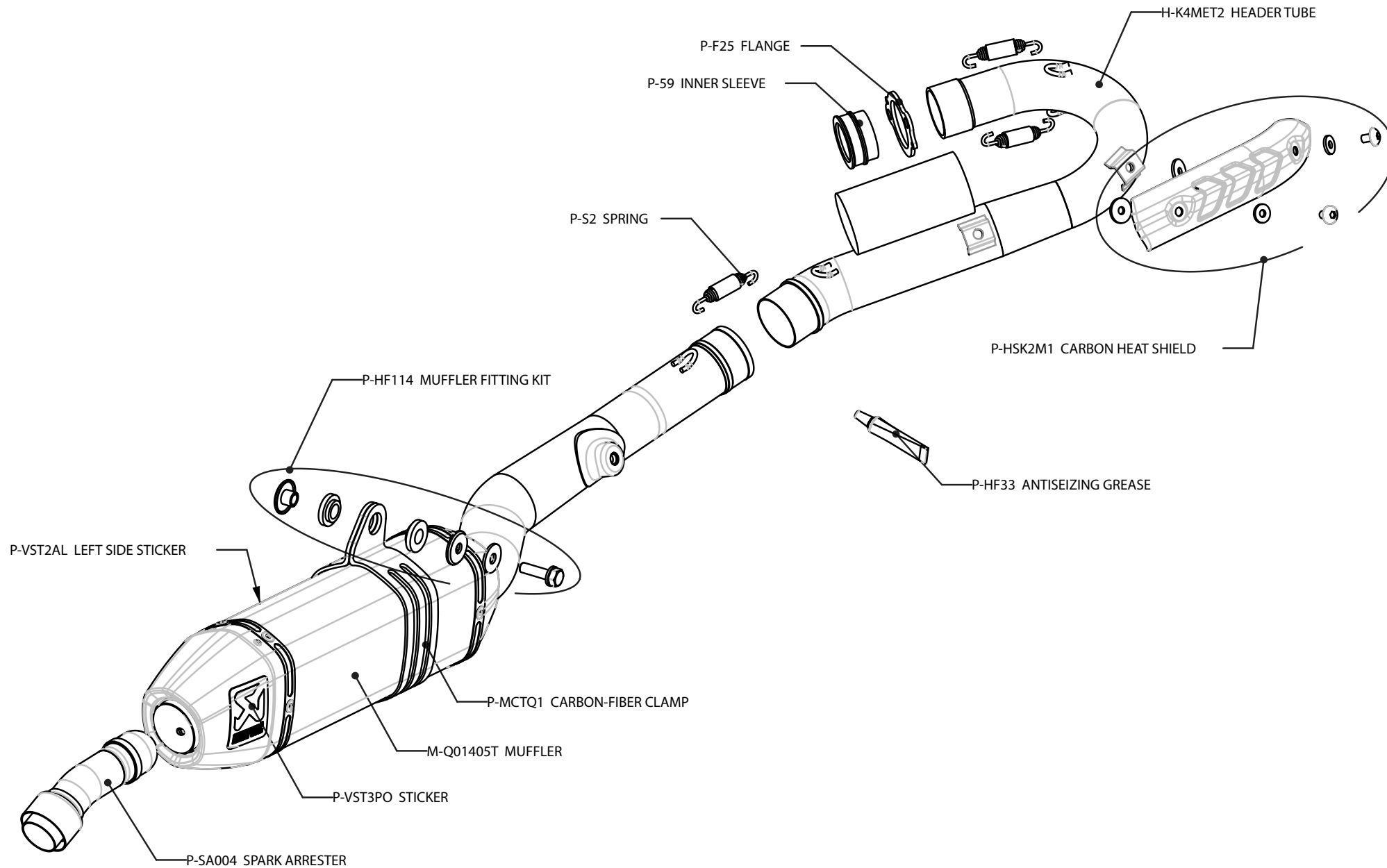
Product code: (108832) S-K4MR3-QT racing, (108840) S-K4MR3-QTA racing spark arrester
 (108833) S-K4MET3-QT evolution, (108841) S-K4MET3-QTA evolution spark arrester



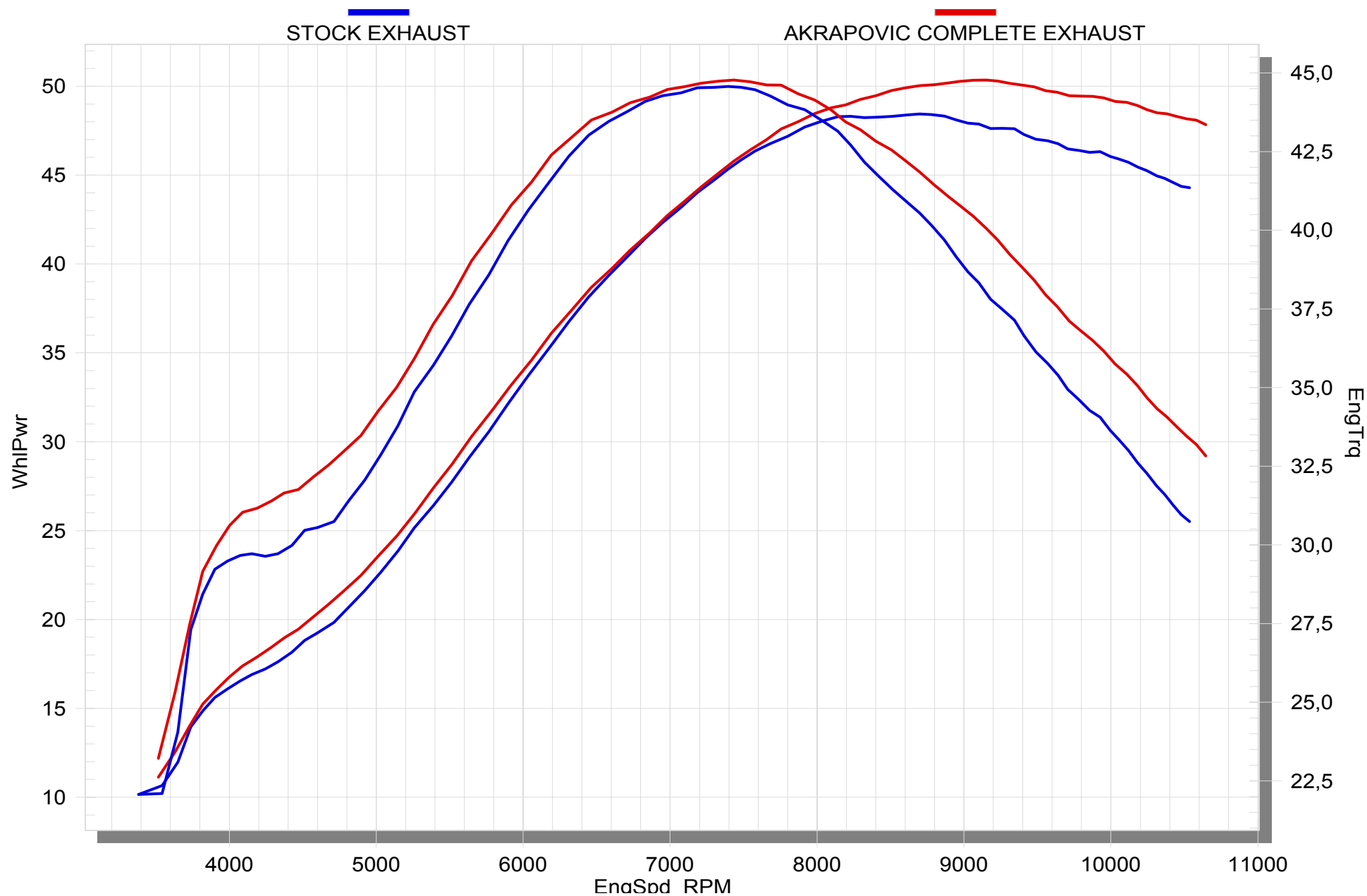
Product code: (108832) S-K4MR3-QT racing, (108840) S-K4MR3-QTA racing spark arrester
(108833) S-K4MET3-QT evolution, (108841) S-K4MET3-QTA evolution spark arrester



Product code: (108832) S-K4MR3-QT racing, (108840) S-K4MR3-QTA racing spark arrester
 (108833) S-K4MET3-QT evolution, (108841) S-K4MET3-QTA evolution spark arrester



Product code: (108832) S-K4MR3-QT racing, (108840) S-K4MR3-QTA racing spark arrester
(108833) S-K4MET3-QT evolution, (108841) S-K4MET3-QTA evolution spark arrester



Product code: (108832) S-K4MR3-QT racing, (108840) S-K4MR3-QTA racing spark arrester
 (108833) S-K4MET3-QT evolution, (108841) S-K4MET3-QTA evolution spark arrester