



Yamaha YFM 660 R (2001 - 2004)

Racing & Evolution Exhaust System

Akrapovic Racing & Evolution Exhaust System

for the Yamaha YFM 660 R (2001 - 2004)

The Akrapovic RACING and EVOLUTION complete exhaust systems were developed for riders who want the most out of their Yamaha YFM 660 R and know how to get it. Both systems offer fantastic performance (the performance is identical in both cases), superior quality and top-flight materials. Like the Slip-On system, the RACING and EVOLUTION are designed to conform to two markets. For the European market systems have a built-in FIM 94 dB Enduro noise damper, and for the US market they come with an approved spark arrester.

PERFORMANCE

Measurements of the Akrapovic EVOLUTION system on the YAMAHA YFM 660 R (without spark arrester & noise damper):

Power: the performance of the EVOLUTION is exceptional. The increase is seen throughout the entire rpm range, with the greatest increases coming at the top end and in the overrev range, in line with the racing character of Evolution exhaust systems.

Torque: the torque curve also shows an impressive performance boost. The EVOLUTION system delivers an increase in torque throughout the entire rpm range.

CONFIGURATION

The Akrapovic EVOLUTION system is composed of conical titanium header tubes, a conical titanium collector and a titanium link pipe. The RACING system is identical, differing only in its material selection. The RACING uses stainless steel. The components are connected with a sleeve joint held together with a silicon-shielded tensioning spring. The link pipe is welded to the muffler. The Offroad muffler design is made entirely of titanium (inlet cap, outlet cap and inner perforation). The muffler is attached to the ATV using two Akrapovic Road carbon-fiber clamps. The systems also include an Akrapovic carbon-fiber heat shield. For the European market systems have a built-in FIM 94 dB noise damper, and for the US market an approved spark arrester, which is also laser engraved on the muffler.

	PERFORMANCE		
	stock	AKRAPOVIC	max. increased power
max. rear wheel power HP / rpm (measured on Dynojet ATV)	38.27 / 6600	41.05 / 6600 (without noise damper & spark arrester) 41.68 / 6800 (spark arrester)	5.89 / 7600 (without noise damper & spark arrester) 7.48 / 7900 (spark arrester)

	CONFIGURATION		
	header tubes	collector	link pipe
material	TITANIUM (Evolution) STAINLESS STEEL (Racing)	TITANIUM (Evolution) STAINLESS STEEL (Racing)	TITANIUM (Evolution) STAINLESS STEEL (Racing)
tube shape	CONICAL	CONICAL	CONICAL

interference crossover tubes	-	lambda sensor	-
header tube inner sleeves	S.S. CNC MACHINED	header tube flanges	ALU CNC MACHINED
header tubes - collector connection	SLEEVE JOINT + SILICON SHIELDED SPRING	collector / header tube - link pipe connection	SLEEVE JOINT + SILICON SHIELDED SPRING
link pipe - muffler connection	WELDED	muffler inlet cap /outlet cap	TITANIUM / TITANIUM
muffler metal interior	TITANIUM	muffler outer sleeve	TITANIUM
muffler clamp	2x CARBON-FIBER ROAD	muffler bracket	-
noise damper	FIM 94 dB ENDURO (EU market) SPARK ARRESTER (US market)	heat shield	CARBON FIBER

OPTIONS				
link pipe	muffler insert	muffler outer sleeve	muffler bracket	heat shield
-	-	-	-	-

	ADDITIONAL DATA				
	stock	AKRAPOVIC		difference	
weight comparison (kg)	5.77	RACING	EVOLUTION	stock - RACING	stock - EVOLUTION
		3.05	2.60	2.72	3.17
noise measurements (dB / rpm)	stock		AKRAPOVIC		
	89.7 / 3250		98.5 / 3250 (without noise damper & spark arrester) 95.8 / 3250 (spark arrester)		
possibility of periodic service without removing A.E.S.	oil		oil filter		
	YES		YES		
legal for street use	NO				

Technical specifications of Akrapovic exhaust systems and related products subject to change without notice.

Akrapovic Racing & Evolution Exhaust System for the Yamaha YFM 660 R (2001 - 2004)



CARBON-FIBER
MUFFLER CLAMPS



ATV
Series

Product code: 103744 (AS-Y6R1-DT), 103664 (AS-Y6ET1-DTT)



Akrapovic Exhaust System Technology copyright 2005, all rights reserved

Akrapovic Racing & Evolution Exhaust System

for the Yamaha YFM 660 R (2001 - 2004)



Akrapovic Exhaust System Technology copyright 2005, all rights reserved

ATV
Series

Product code: 103744 (AS-Y6R1-DT), 103664 (AS-Y6ET1-DTT)

Akrapovic Racing & Evolution Exhaust System for the Yamaha YFM 660 R (2001 - 2004)



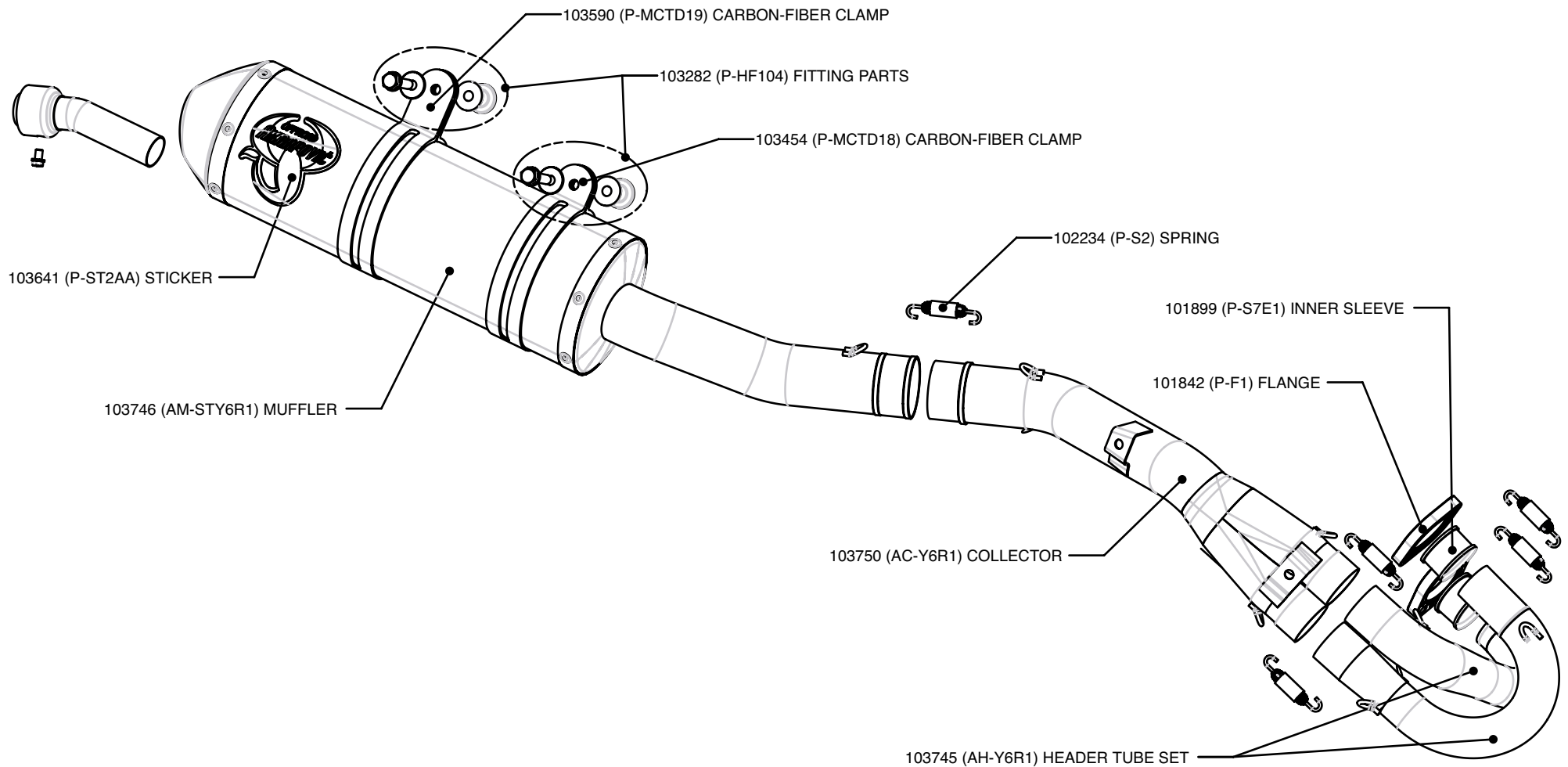
Akrapovic Exhaust System Technology, copyright 2005, all rights reserved

ATV
Series

Product code: 103744 (AS-Y6R1-DT), 103664 (AS-Y6ET1-DTT)

Akrapovic Racing Exhaust System

for the Yamaha YFM 660 R (2001 - 2004)

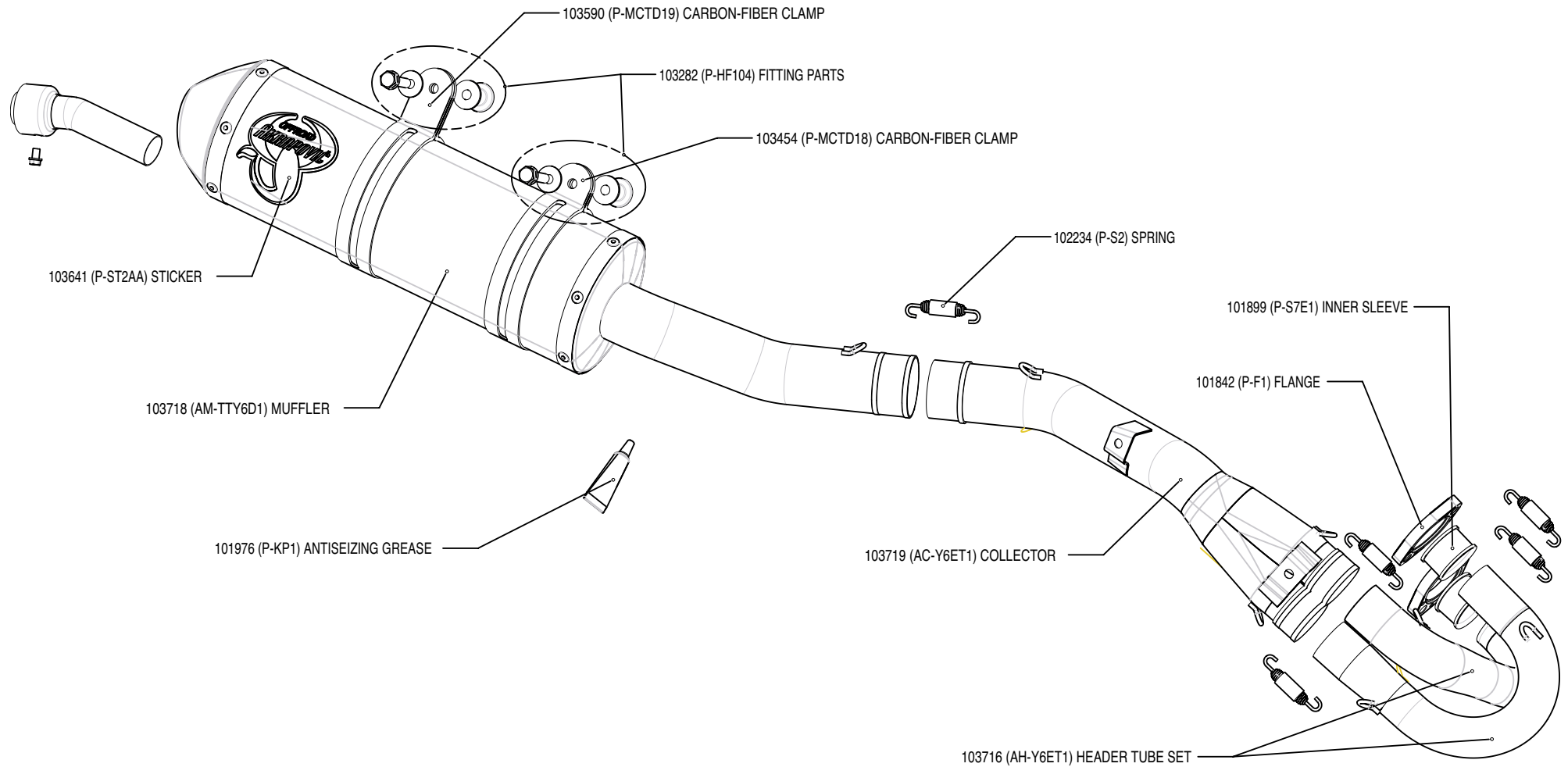


Akrapovic Exhaust System Technology copyright 2005, all rights reserved

ATV Series

Akrapovic Evolution Exhaust System

for the Yamaha YFM 660 R (2001 - 2004)



Akrapovic Exhaust System Technology copyright 2005, all rights reserved

ATV Series

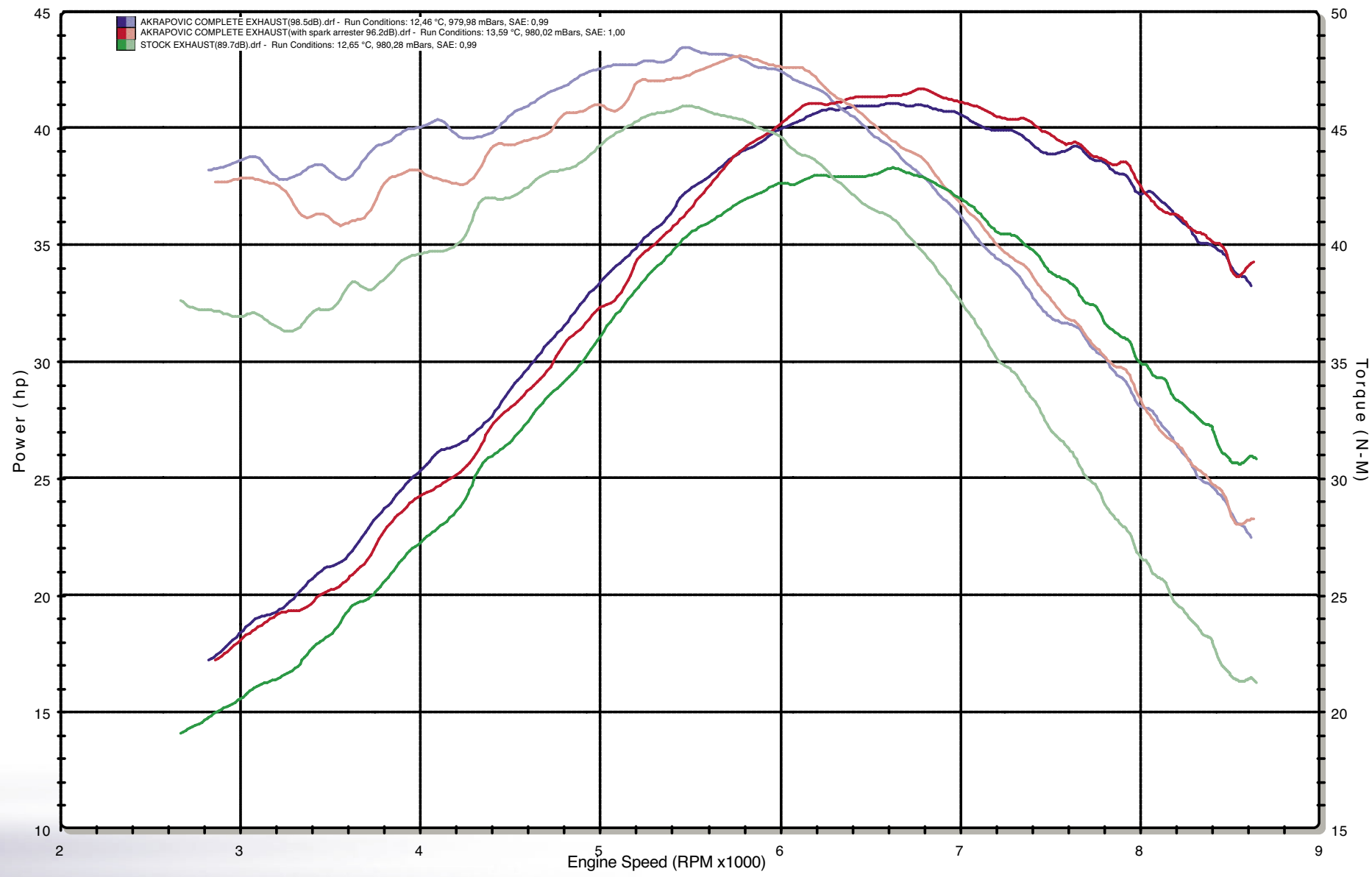


Akrapovic Racing & Evolution Exhaust System for the Yamaha YFM 660 R (2001 - 2004)

DYNOJET RESEARCH

CF: SAE Smoothing: 5

AKRAPOVIC EXHAUST SYSTEM TECHNOLOGY



ATV Series

Product code: 103744 (AS-Y6R1-DT), 103664 (AS-Y6ET1-DTT)



Akrapovic Exhaust System Technology copyright 2005, all rights reserved