



Yamaha YZF R1 (2007)

Slip-On & Slip On SP Series Exhaust System



# Akrapovic Slip-On & Slip-On SP Series Exhaust System + Y part for the Yamaha YZF R1 (2007)

## Description

Akrapovic SLIP-ON represents an initial move in the direction of tuning and is intended for drivers, which do not desire fundamental changes in the area of the exhaust system. We offer two options of the SLIP-ON system for the Yamaha R1. Both are facilitated by the use of the stock catalyst as the system does not interfere with the catalyst position. In terms of performance measurements, the two types do not differ much. Their advantages can be illustrated in comparison with a serial exhaust system, since the increase of power and torque based on smaller modifications on the exhaust system relatively large. With the use of the catalyst the Slip-On and Slip-On SP series are available also in a street legal version. We also offer an upgrade of both Slip-On systems with a Y link pipe, which offers even more power and torque through the entire range of RPM. Because this Y link pipe replaces an original part of the exhaust, which contains the catalytic converter, the combination of the Slip-On system with the Y link pipe is not street legal.

### PERFORMANCE

#### Measurements of the Akrapovic SLIP-ON system + Y link pipe on the YAMAHA YZF R1:

Power & Torque: measurements for both options of the exhaust were prepared. There is a minimal difference between the two options. Both exhaust options obtain a somewhat better result in the lower and particularly in the middle range of rotation. Despite the initial level of tuning, the system can substantially upgrade the serial release of power from the engine. At 12500 rpm, we measured 168,7 HP at the back wheel (both options). The systems do not differ much in terms of torque either. The upgrade of a serial torque is nicely evident particularly between 3200 rpm and 6500 rpm, in which range the motor gains the most.

### CONFIGURATION

We offer two options of the Akrapovic SLIP-ON exhaust system for Yamaha R1: the standard Slip-On and the SP Series Slip-On. In both cases the system is composed of two mufflers, the difference being only the used materials and the design. Slip-On has mufflers (outer sleeve) made from titanium or carbon, the SP series only from titanium. In both cases, the mufflers are attached beneath the seat of the motorcycle by carbon clamps. Link pipes are made from titanium (SP series from stainless steel), cylindrical and welded to the mufflers. The joining of the link pipes with the stock header assembly was executed with a sleeve joint, the strength of the joint is provided by a metal clamp. The system does not retain the stock catalytic converter of exhaust gases since it is replaced by the Y link pipe. The following systems are available in this configuration: Slip-On open, Slip-On Street Legal, Slip-On SP series open, Slip-On SP series homologated.

	PERFORMANCE		
	stock	AKRAPOVIC	max. increased power
max. rear wheel power HP / rpm (measured on SuperFlow Cycle Dyn)	164.3 / 12600	168.7 / 12500	7.8 / 7600

	CONFIGURATION		
	header tubes	collector	link pipe
material	-	STAINLESS STEEL	TITANIUM STAINLESS STEEL
tube shape	-	CONICAL	CYLINDRICAL

interference crossover tubes	-	lambda sensor	YES
header tube inner sleeves	-	header tube flanges	-
header tubes - collector connection	SLEEVE JOINT + METAL CLAMP	collector / header tube - link pipe connection	SLEEVE JOINT + METAL CLAMP
link pipe - muffler connection	WELDED	muffler inlet cap / outlet cap	TITANIUM / CARBON-FIBER
muffler metal interior	TITANIUM STAINLESS STEEL	muffler outer sleeve	TITANIUM or CARBON-FIBER / TITANIUM (SP series)
muffler clamp	CARBON-FIBER	muffler bracket	-
muffler insert	EU	NOISE DAMPER	-
	US	-	catalytic converter

	ADDITIONAL DATA				
weight comparison (kg)	stock	AKRAPOVIC		difference	
	8.1	SO+y	SP series SO+y	stock - SO+Y	stock - SP series SO+y
		4.45	5.01	3.65	1.09
noise measurements (dB / rpm)	stock		AKRAPOVIC		
	97 / 4500		100.9 / 4500 (homolog. Version 97/4500)		
possibility of periodic service without removing A.E.S.	oil		oil filter		
	YES		YES		
legal for street use	YES (homologated version) NO (open version)				

Technical specifications of Akrapovic exhaust systems and related products subject to change without notice.

Product code: 106825 (S-Y10SO8-DTC), 106824 (S-Y10SO8-DTT)  
106827 (S-Y10SO8-HDTC), 106826 (S-Y10SO8-HDTT) homologated  
106943 (SS-Y10SO8-DC), 106942 (SS-Y10SO8-DT)  
106945 (SS-Y10SO8-HDC), 106944 (SS-Y10SO8-HDT) homologated



# Akrapovic Slip-On & Slip-On SP Series Exhaust System

## for the Yamaha YZF R1 (2007)

## Description

Akrapovic SLIP-ON represents an initial move in the direction of tuning and is intended for drivers, which do not desire fundamental changes in the area of the exhaust system. We offer two options of the SLIP-ON system for the Yamaha R1: the standard Slip-On and Slip-On SP Series. Both are facilitated by the use of the stock catalyst as the system does not interfere with the catalytic converter set up. In terms of performance measurements, the two types do not differ much. Their advantages can be illustrated in comparison with a serial exhaust system, since the increase of power and torque based on smaller modifications on the exhaust system relatively large. With the use of the catalytic converter the Slip-On and Slip-On SP series are available also in a street legal version.

### PERFORMANCE

#### Measurements of the Akrapovic SLIP-ON system on the YAMAHA YZF R1:

Power & Torque: measurements for both options of the exhaust were prepared. There is a minimal difference between the two options. Both exhaust options obtain a somewhat better result in the lower and particularly in the middle range of rpm. Despite the initial level of tuning, the system can substantially upgrade the serial release of power from the generator. At 12500 rpm, we measured 167 HP at the back wheel (both options). The systems do not differ much in terms of torque either. the upgrade of a serial torque is nicely evident particularly between 3200 rpm and 5000 rpm, in which range the motor gains the most.

### CONFIGURATION

We offer two options of the Akrapovic SLIP-ON exhaust system for Yamaha R1: the standard Slip-On and the SP Series Slip-On. In both cases the system is composed of two mufflers, the difference being only the used materials and the design. Slip-On has mufflers (outer sleeve) made from titanium or carbon, the SP series only from titanium. In both cases, the mufflers are attached beneath the seat of the motorcycle by carbon clamps. Link pipes are made from titanium (SP series from stainless steel), cylindrical and welded to the mufflers. The joining of the link pipes with the stock header assembly was executed with a sleeve joint, the strength of the joint is provided by a metal clamp. The system retains the stock catalytic converter of exhaust gases. The following systems are available in this configuration: Slip-On open, Slip-On Street Legal, Slip-On SP series open, Slip-On SP series homologated.

	PERFORMANCE		
	stock	AKRAPOVIC	max. increased power
max. rear wheel power HP / rpm (measured on SuperFlow Cyle Dyn)	164.3 / 12600	167 / 12500	6.6 / 7600

	CONFIGURATION		
	header tubes	collector	link pipe
material	-	-	TITANIUM STAINLESS STEEL
tube shape	-	-	CYLINDRICAL

interference crossover tubes	-	lambda sensor	NO
header tube inner sleeves	-	header tube flanges	-
header tubes - collector connection	-	collector / header tube - link pipe connection	SLEEVE JOINT + METAL CLAMP
link pipe - muffler connection	WELDED	muffler inlet cap / outlet cap	TITANIUM / CARBON-FIBER
muffler metal interior	TITANIUM STAINLESS STEEL	muffler outer sleeve	TITANIUM or CARBON-FIBER / TITANIUM (SP series)
muffler clamp	CARBON-FIBER	muffler bracket	-
muffler insert	EU	NOISE DAMPER	heat shield
	US	-	-
		catalytic converter	-

	ADDITIONAL DATA				
weight comparison (kg)	stock	AKRAPOVIC		difference	
	4.52	SO	SP series	stock - SO	stock - SP series SO
		3.13	3.69	1.39	0.83
noise measurements (dB / rpm)	stock		AKRAPOVIC		
	97 / 4500		100.9 / 4500 (homolog. Version 97/4500)		
possibility of periodic service without removing A.E.S.	oil		oil filter		
	YES		YES		
legal for street use	YES (homologated version) NO (open version)				

Technical specifications of Akrapovic exhaust systems and related products subject to change without notice.

Product code: 106825 (S-Y10SO8-DTC), 106824 (S-Y10SO8-DTT)  
106827 (S-Y10SO8-HDTC), 106826 (S-Y10SO8-HDTT) homologated  
106943 (SS-Y10SO8-DC), 106942 (SS-Y10SO8-DT)  
106945 (SS-Y10SO8-HDC), 106944 (SS-Y10SO8-HDT) homologated

# Akrapovic Slip-On SP Series Exhaust System for the Yamaha YZF R1 (2007)



OPTIONAL LINK PIPE

CARBON-FIBER  
MUFFLER CLAMPS

Product code: 106943 (SS-Y10SO8-DC), 106942 (SS-Y10SO8-DT)  
106945 (SS-Y10SO8-HDC), 106944 (SS-Y10SO8-HDT) homologated

# Akrapovic Slip-On SP Series Exhaust System for the Yamaha YZF R1 (2007)



Akrapovic Exhaust System Technology copyright 2007, all rights reserved

Product code: 106943 (SS-Y10SO8-DC), 106942 (SS-Y10SO8-DT)  
106945 (SS-Y10SO8-HDC), 106944 (SS-Y10SO8-HDT) homologated



# Akrapovic Slip-On SP Series Exhaust System for the Yamaha YZF R1 (2007)

Bike Photo

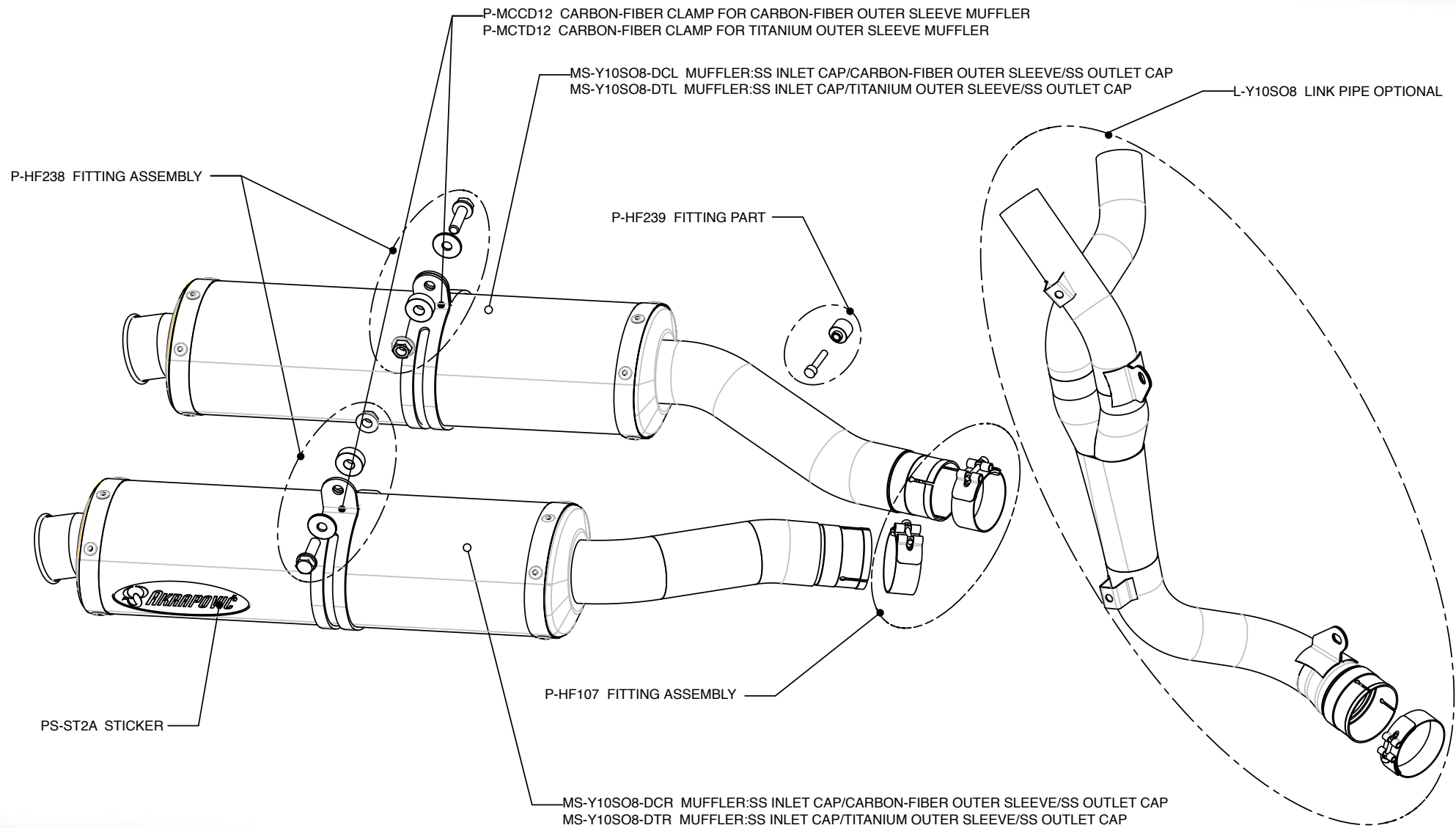
Akrapovic Exhaust System Technology copyright 2007, all rights reserved



Road  
Program

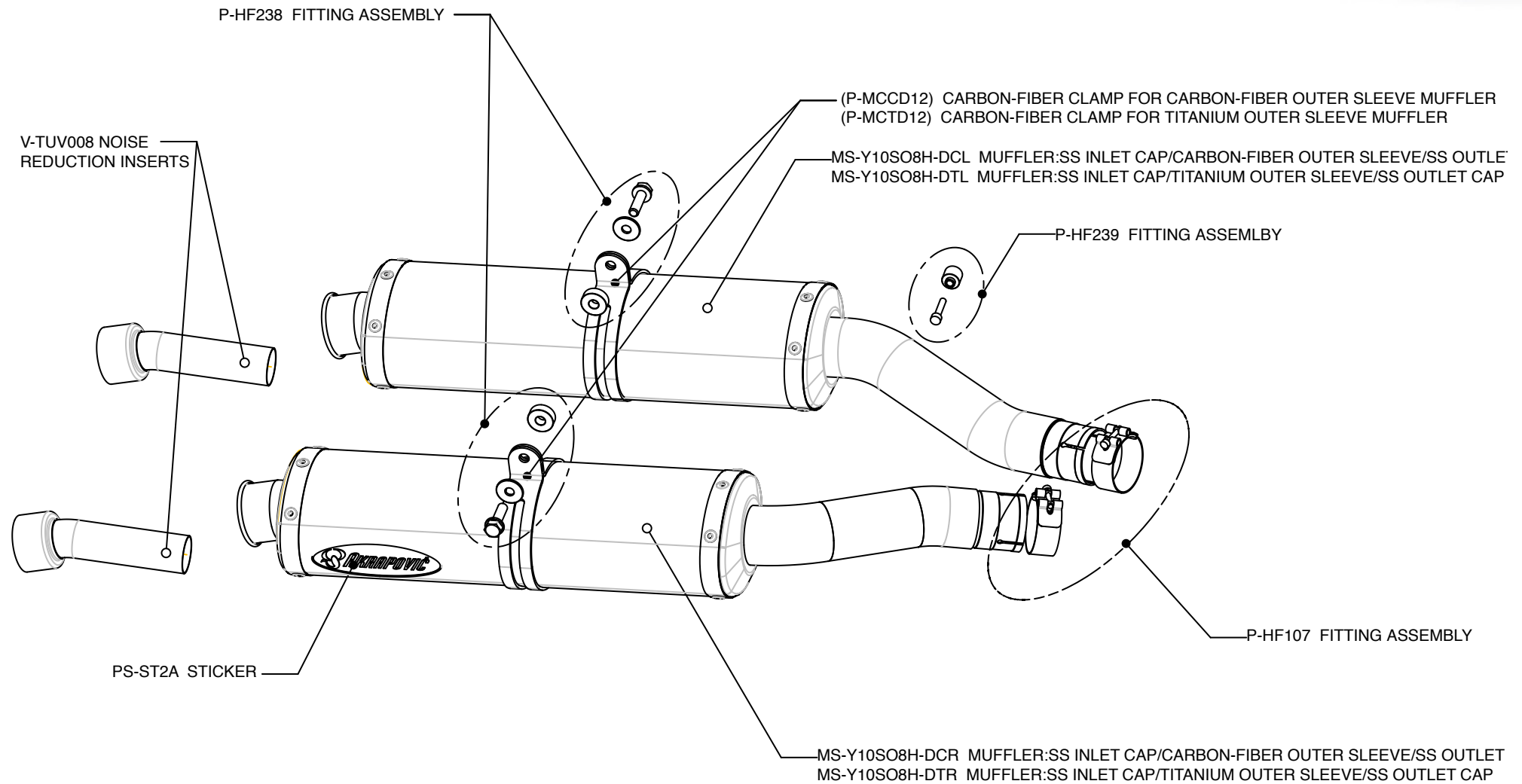
Product code: 106943 (SS-Y10SO8-DC), 106942 (SS-Y10SO8-DT)  
106945 (SS-Y10SO8-HDC), 106944 (SS-Y10SO8-HDT) homologated

# Akrapovic On SP Series Exhaust System for the Yamaha YZF R1 (2007)



Product code: 106943 (SS-Y10SO8-DC), 106942 (SS-Y10SO8-DT)

# Akrapovic Slip-On SP Series Exhaust System for the Yamaha YZF R1 (2007)

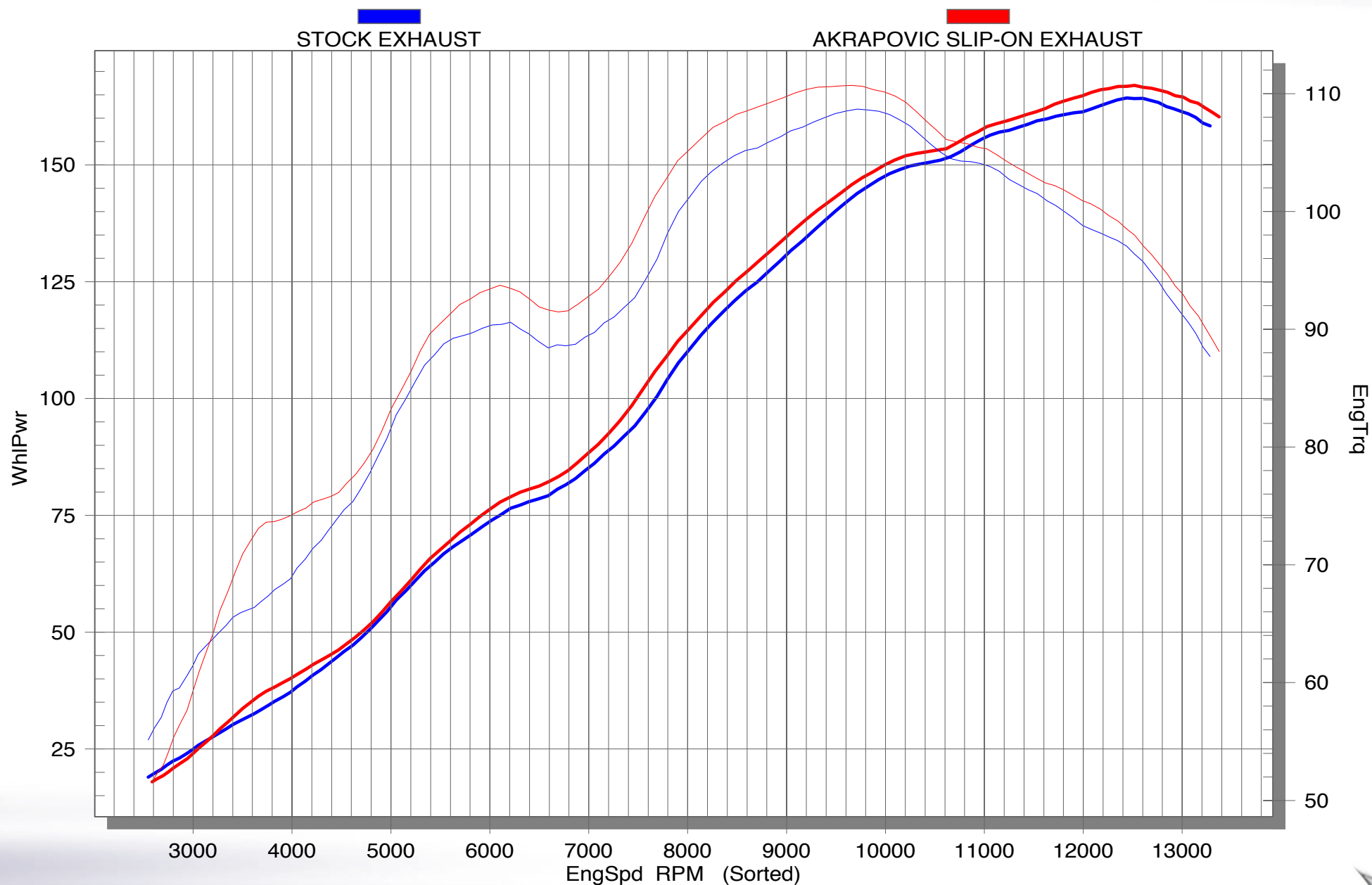


Product code: 106945 (SS-Y10SO8-HDC), 106944 (SS-Y10SO8-HDT) homologated



# Akrapovic Slip-On & Slip-On SP Series Exhaust System for the Yamaha YZF R1 (2007)

Diagram / Chart

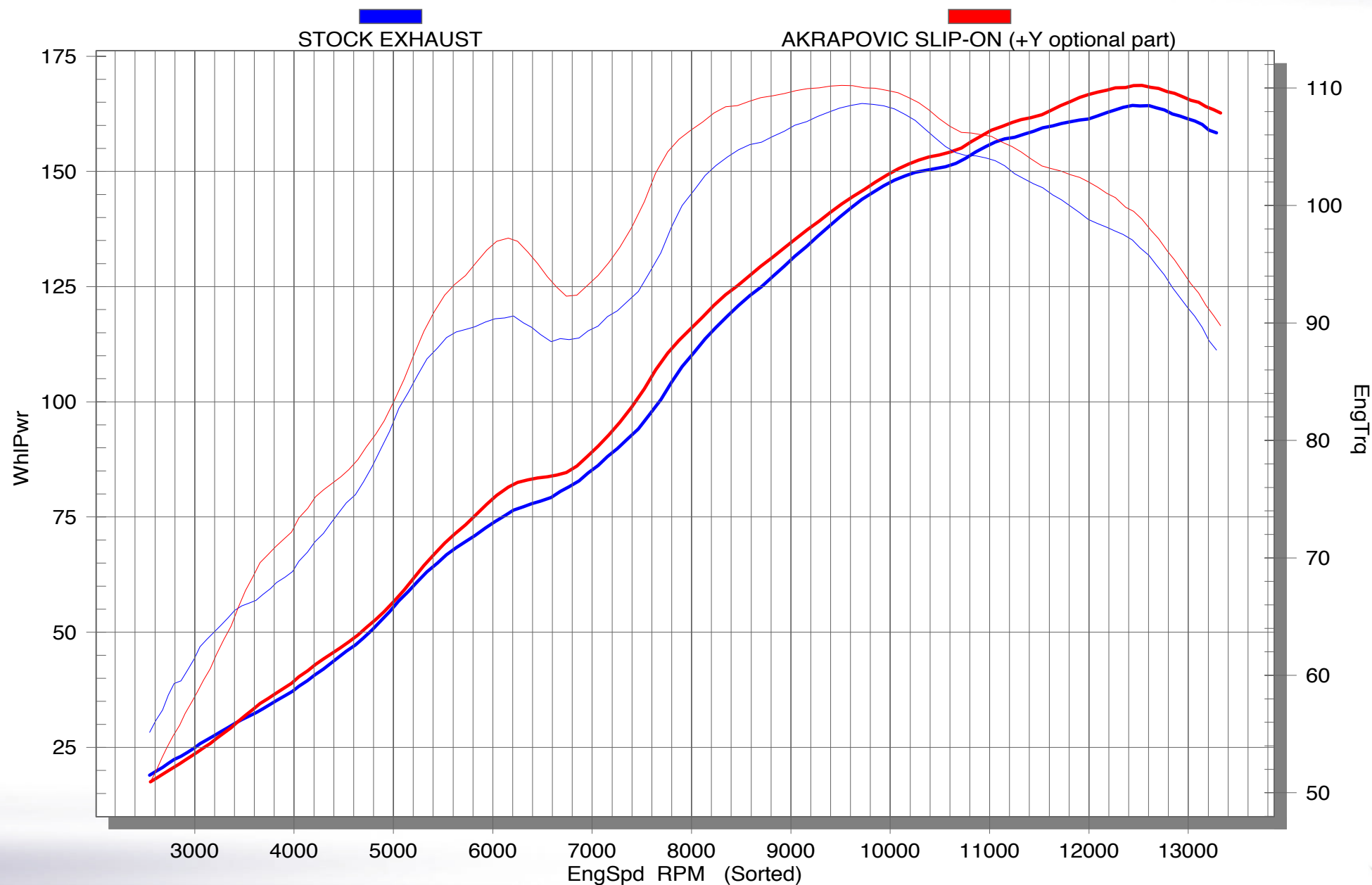


Product code: 106825 (S-Y10SO8-DTC), 106824 (S-Y10SO8-DTT)  
106827 (S-Y10SO8-HDTC), 106826 (S-Y10SO8-HDTT) homologated  
106943 (SS-Y10SO8-DC), 106942 (SS-Y10SO8-DT)  
106945 (SS-Y10SO8-HDC), 106944 (SS-Y10SO8-HDT) homologated



# Akrapovic Slip-On & Slip-On SP Series Exhaust System for the Yamaha YZF R1 (2007)

Diagram / Chart



Product code: 106825 (S-Y10SO8-DTC), 106824 (S-Y10SO8-DTT)  
106827 (S-Y10SO8-HDTC), 106826 (S-Y10SO8-HDTT) homologated  
106943 (SS-Y10SO8-DC), 106942 (SS-Y10SO8-DT)  
106945 (SS-Y10SO8-HDC), 106944 (SS-Y10SO8-HDT) homologated