



Kawasaki Z 1000 (2003,2004)

Slip-On SP Series Exhaust System

Akrapovic Slip-On SP Series Exhaust System

for the Kawasaki Z 1000 (2003, 2004)

The dynamic engine, bold street-fighter looks and especially the four massive exhaust pipes inspired our R&D department to develop an exhaust tuning component for Z-owners. We have produced a lightweight SLIP-ON SP SERIES system which will have a major impact on the looks and sound of the big Kawasaki, lighten its overall weight and increase the power and torque of the engine. The system is made of high-quality stainless steel and titanium (muffler outer sleeve). A further feature of Akrapovic SP series exhaust systems is that they are officially approved for street use.

PERFORMANCE

Measurements of the Akrapovic SLIP-ON SP SERIES system on the Kawasaki Z 1000 (without noise damper):

Power: the Akrapovic SLIP-ON system complements the big four incredibly well. The results from a minimal modification are more than satisfactory. From 3200 rpm on the SLIP-ON system increases the output over the entire rpm range, with a linear increase over the stock power. Maximum power to the rear wheel is 126.1 HP at 10300 rpm, while max. increased power is 6.1 HP at 6800 rpm.

Torque: the increase in torque is another sign of the success of the Akrapovic SLIP-ON system and indicates the excellent design of this system, intended exclusively for the Kawasaki Z 1000. From 3200 rpm on the torque is increased over the entire range, which is exceptionally useful for more comfortable and smooth gear selection and shifting.

CONFIGURATION

Akrapovic SLIP-ON SP SERIES exhaust system is composed of two main parts: a link pipe and a muffler. Due to construction demands they are welded together and form a single element. The link pipe is made of high-quality stainless steel, and conical shape in order to obtain maximum performance. It is attached to the header assembly with a free-floating connection secured with a metal clamp. Unwanted movement of the mufflers is restricted using the well-known Akrapovic carbon-fiber clamps. The shape of the mufflers is the familiar Akrapovic oval. The Kawasaki Z 1000 has mufflers on both sides. The stock version has four, which might not fit the taste of every rider. The Akrapovic version reduces this number to two, i.e. one on each side. The muffler outer sleeve is available in the refined satin sheen of titanium. All metal parts in the interior of the mufflers are made of stainless steel. The mufflers have a built-in noise damper, and therefore conforms to regulations for street use. The left-side component has a fitting welded onto the link pipe for mounting the rubber stopper which should be removed from the stock left-side link pipe and prevents damage to the link pipe when the side stand is raised.

	PERFORMANCE		
	stock	AKRAPOVIC	max. increased power
max. rear wheel power HP / rpm (measured on SuperFlow Cycle Dyn)	123.6 / 10500	126.1 / 10300	6.1 / 6800

	CONFIGURATION		
	header tubes	collector	link pipe
material	-	-	STAINLESS STEEL
tube shape	-	-	CONICAL

interference crossover tubes	-	lambda sensor	-
header tube inner sleeves	-	header tube flanges	-
header tubes - collector connection	-	collector / header tube - link pipe connection	FREE-FLOATING + METAL CLAMP
link pipe - muffler connection	WELDED	muffler inlet cap /outlet cap	STAINLESS STEEL / STAINLESS STEEL
muffler metal interior	STAINLESS STEEL	muffler outer sleeve	TITANIUM
muffler clamp	DOUBLE CARBON-FIBER ROAD	muffler bracket	-
noise damper	HOMOLOGATED	heat shield	-

OPTIONS				
link pipe	noise damper	muffler outer sleeve	muffler bracket	heat shield
-	-	-	-	-

	ADDITIONAL DATA				
	stock	AKRAPOVIC		difference	
		S.S. link pipe	TITANIUM link pipe	stock - S.S.	stock - titanium
weight comparison (kg)	12.45	3.89	-	8.56	-
noise measurements (dB / rpm)	stock		AKRAPOVIC		
	94 / 5000		94 / 5000		
possibility of periodic service without removing A.E.S.	oil		oil filter		
	YES		YES		
legal for street use	YES				

Technical specifications of Akrapovic exhaust systems and related products subject to change without notice.

Akrapovic Slip-On SP Series Exhaust System for the Kawasaki Z 1000 (2003, 2004)



CARBON-FIBER
MUFFLER CLAMPS

Road
Program



Akrapovic Slip-On SP Series Exhaust System for the Kawasaki Z 1000 (2003, 2004)



Akrapovic Exhaust System Technology copyright 2004, all rights reserved

Road Program

Akrapovic Slip-On SP Series Exhaust System for the Kawasaki Z 1000 (2003, 2004)

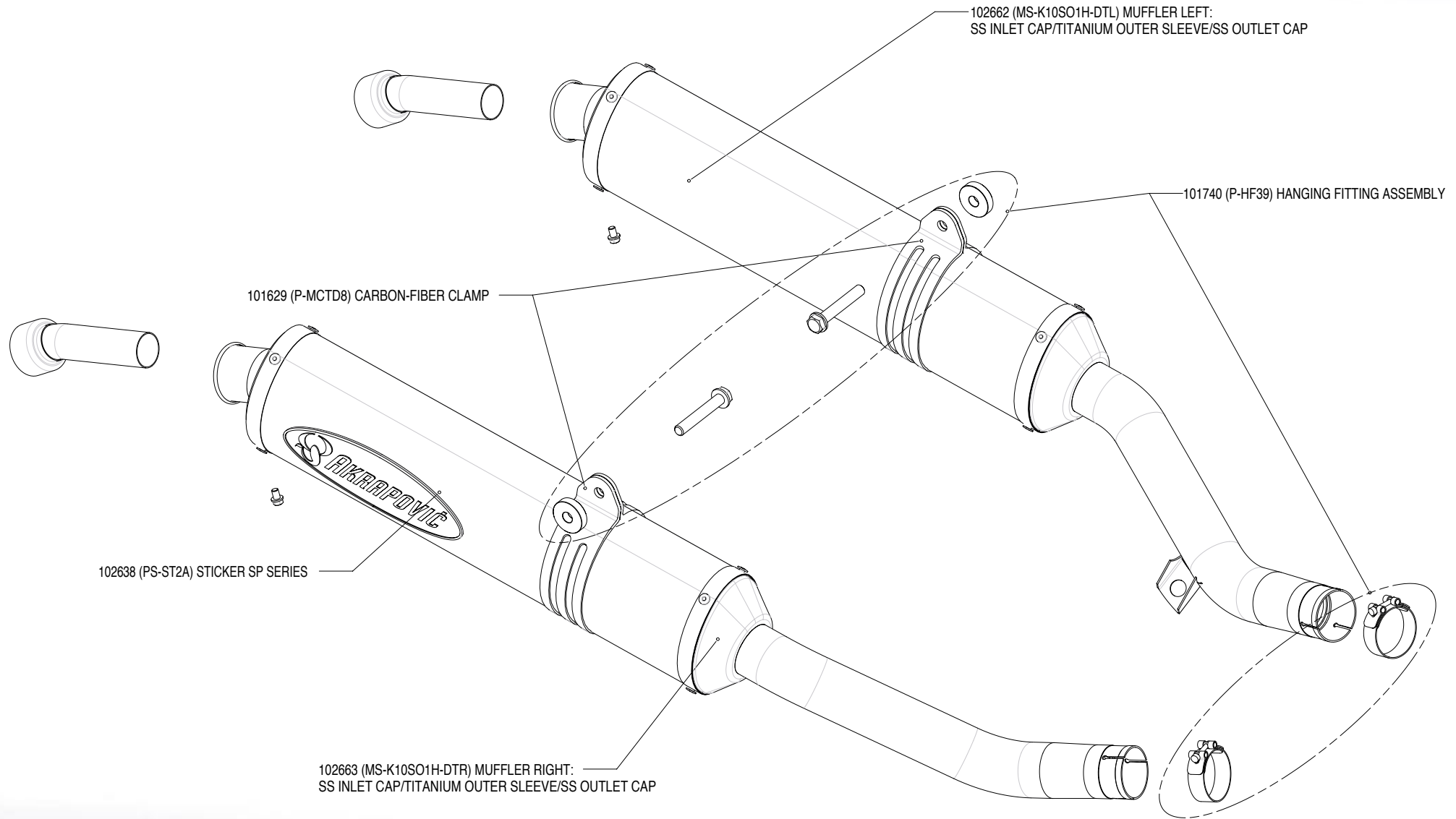


Akrapovic Exhaust System Technology copyright 2004, all rights reserved

Road Program

Akrapovic Slip-On SP Series Exhaust System

for the Kawasaki Z 1000 (2003, 2004)

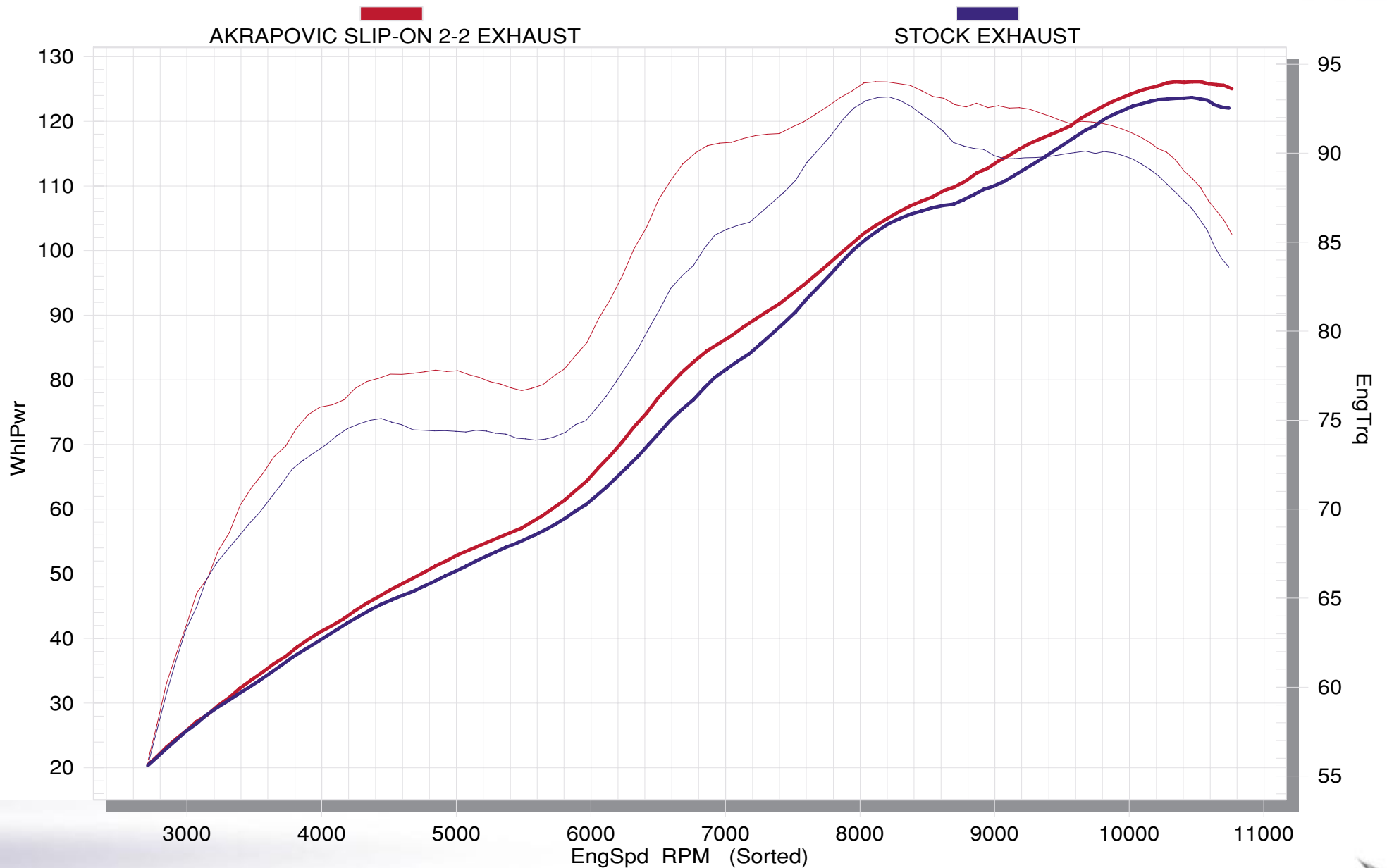


Akrapovic Exhaust System Technology copyright 2004, all rights reserved

Road Program

Akrapovic Slip-On SP Series Exhaust System

for the Kawasaki Z 1000 (2003, 2004)



Akrapovic Exhaust System Technology copyright 2004, all rights reserved

Road Program

